

INTEGRAL archive status

There are two versions of the archive.

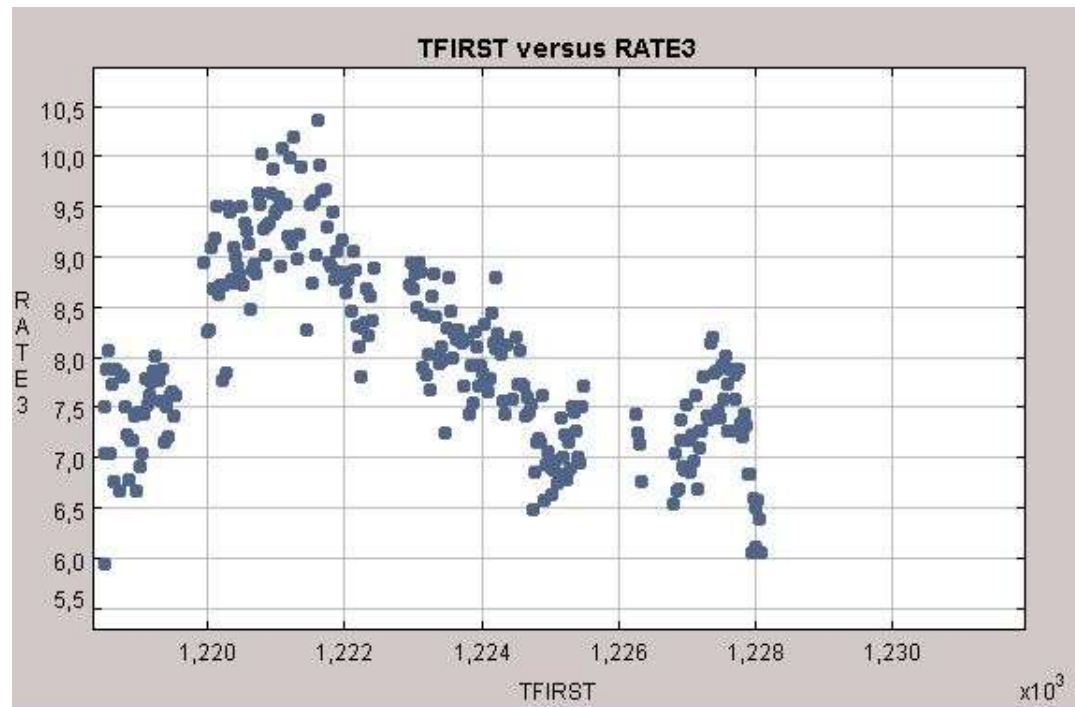
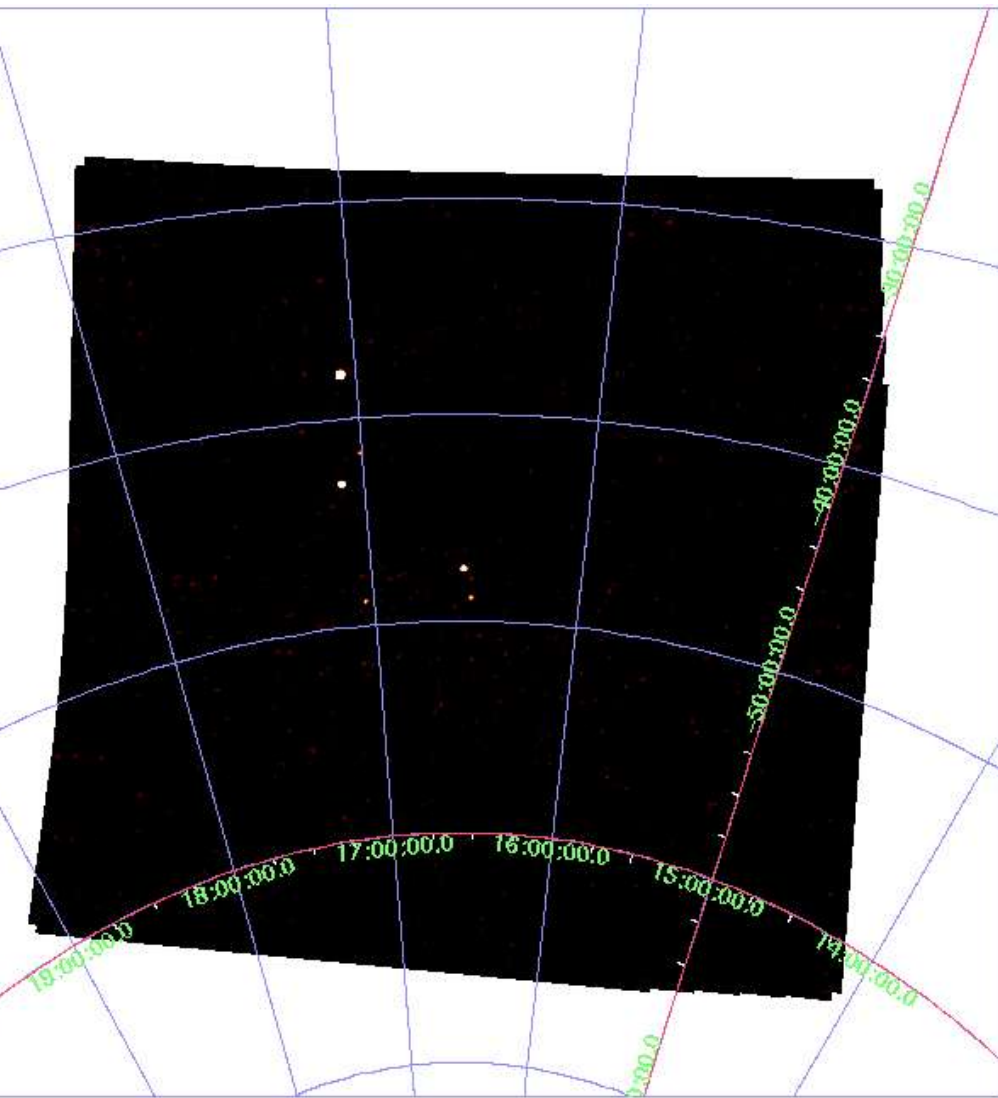
- Version 1 contains all data from revol 1 to revol 269 (dec 12, 2004). It will be discontinued later this year.
- Version 2 contains all reprocessed data from revol 1 to revol 172 and all data starting with rev 270 (jan 1 2005). The filling of the gap (173-269) is on-going.

Version 2 also contains science products for all public data:

- ISGRI and JEM-X imaging products (images, list of detected sources and fluxes) for all pointings
- ISGRI, JEM-X and OMC source lightcurves
- ISGRI mosaics per observation

Current W3browse science data preview

Select:	Description	Catalog	Data	Default Radius (arcmin)	Mission	Table Type
All <input checked="" type="checkbox"/>						
<input checked="" type="checkbox"/>	SCW - Science Window Data, revision 2	integral_rev2_scw	Y	300	INTEGRAL-REV2	Observation
<input checked="" type="checkbox"/>	OBS - Observation Data, revision 2	integral_rev2_og_scw	Y	300	INTEGRAL-REV2	Observation
<input checked="" type="checkbox"/>	JEMX Source Results	integral_rev2_jmx_sr1	N	5	INTEGRAL-REV2	Observation
<input checked="" type="checkbox"/>	ISGRI Source Results	integral_rev2_isgri_sr1	N	5	INTEGRAL-REV2	Observation
<input checked="" type="checkbox"/>	OMC Source Results	integral_rev2_omc_sr1	N	0.5	INTEGRAL-REV2	Observation
<input checked="" type="checkbox"/>	Proposal Information and Observation Parameters	integral_rev2_prop_obs	N	300	INTEGRAL-REV2	Proposal



Next developments:

- SPI analysis results per observation and revolution
- Background subtracted ISGRI mosaic images per observation
- PICSIT images per observation

- Re-run with improved software/calibration (OSA 5)

Interfaces to the data:

Current:

- W3Browse
- Ftp

Future:

- Access to science results per source (3-4 weeks)
- All-sky images (some months)