

INTEGRAL

Science Operations Centre

Announcement of Opportunity for Observing Proposals (AO-8)



Integral AO Tools Software User Manual

INT/OAG/10-0330/Dc

Issue 1.0

15 March 2010

Prepared by S. de Castro, M. Bindels

	<i>INTEGRAL</i> <i>Integral AO Tools</i> <i>Software User Manual</i>	Doc.No: INT/OAG/10-0330/Dc Issue: 1.0 Date: 15 March 2009 Page: ii
---	---	---

Document Status Sheet

Document Title		Integral AO Tools Software User Manual	
Reference No:		INT/OAG/10-0330/Dc	
Issue	Revision	Date	Reason for change
1	0	15 March 2010	Issue for AO-8

Based on inputs from P. Balm and G. Bélanger (ISOC/ESAC).



INTEGRAL
Integral AO Tools
Software User Manual

Doc.No: INT/OAG/10-0330/Dc
Issue: 1.0
Date: 15 March 2009
Page: iii

Table of Contents

1	Introduction	5
2	Proposal Generation Tool (PGT)	6
2.1	Entering data	6
2.1.1	The Main Panel	6
2.1.2	The Admin, Proposal, Observation and Data Rights Details Panels	7
2.2	Saving, loading and printing	11
2.2.1	Saving	11
2.2.2	Loading	12
2.2.3	Printing	12
2.3	Submitting a proposal to ISOC	13
2.3.1	Submitting for the first time	13
2.3.2	Resubmitting a proposal	14
2.3.3	Obtaining a copy of a submitted proposal from ISOC	14
3	Observing Time Estimator (OTE)	15
3.1	Using OTE	15
3.1.1	Input	15
3.1.2	Output	16
3.2	Continuum calculations: a note on energy ranges	16
3.3	Hints and warnings	17
4	Target Visibility Predictor (TVP)	18
4.1	Viewing constraints	18
4.2	How visibility is calculated	18
4.3	Using TVP	18
4.3.1	Input	18
4.3.2	Output	19
5	Exposure Map Tool (EMT)	20
5.1	Using EMT	20
5.1.1	Input	20
5.1.2	Output	20



INTEGRAL
Integral AO Tools
Software User Manual

Doc.No:	INT/OAG/10-0330/Dc
Issue:	1.0
Date:	15 March 2010
Page:	5 of 20

1 Introduction

The purpose of this document is to describe the use of the software tools made available to observers who wish to submit a proposal for INTEGRAL observations.

The Integral AO Tools provided by the INTEGRAL Science Operations Centre (ISOC) include: the Proposal Generation Tool (PGT), the Observation Time Estimator (OTE) and the Target Visibility Predictor (TVP). The latest version of these tools together with the associated documentation is available from the ISOC web page: <http://integral.esac.esa.int>.

If you discover a problem with any of the tools, please read the Frequently Asked Questions (FAQ) at <http://integral.esac.esa.int/FAQ>. If you do not find the answer to your question, please contact the INTEGRAL Helpdesk: <mailto:inthelp@sciops.esa.int>.

2 Proposal Generation Tool (PGT)

PGT can be downloaded from: <http://integral.esac.esa.int/isoc/operations/html/pgtao8>. Installation instructions and answers to FAQ are also provided there.

Once PGT has been successfully installed, it is launched by running an executable script called 'pgt' on UNIX-like platforms, clicking on the icon of the "Application" folder on Mac systems or by double-clicking on the desktop icon on Windows systems.

2.1 Entering data

2.1.1 The Main Panel

When the PGT is launched, the **Main Panel** is displayed (Figure 1). This panel serves as the parent to the **Admin Details Panel**, the **Proposal Details Panel**, the **Observation Details Panel** and the **Data Rights Panel** all of which can be accessed by clicking the appropriate button found in the top half of the Main Panel.

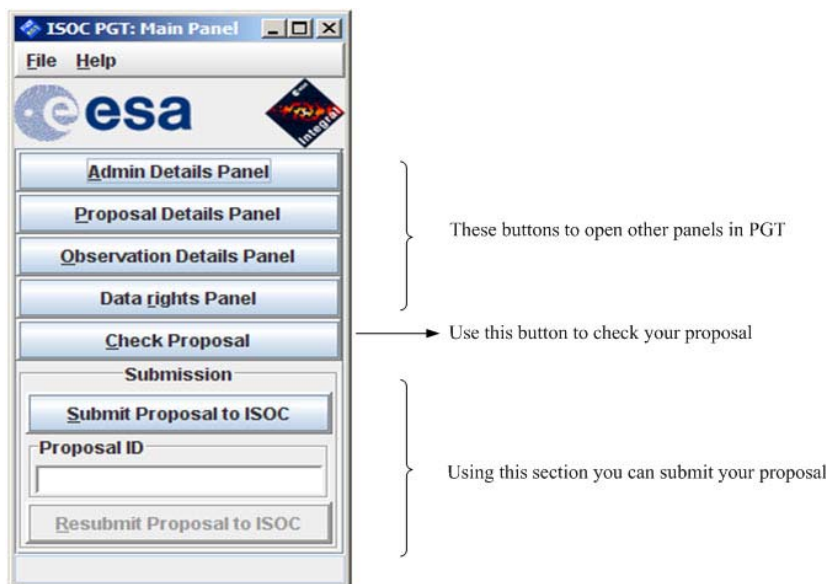


Figure 1 - The Main Panel of PGT

Below these four buttons, there is a **Check Proposal** button that initiates a series of checks on the proposal and lists anything that is wrong or incomplete. This check can be performed at any time.

The lower half of the Main Panel controls proposal submission (or resubmission). Clicking the **Submit Proposal to ISOC** button, will send an electronic version of the proposal to the ISOC and you will be given an assigned number, for any possible further submission of the same proposal to ISOC.

2.1.2 The Admin, Proposal, Observation and Data Rights Details Panels

PGT provides four details panels that encompass all the information about the proposal. These include: administrative details, proposal details, observation details and data rights details on that observations and are accessed by clicking the corresponding button in the Main Panel. *All fields, in any panel, that have a light yellow background are mandatory and cannot be left blank.*

2.1.2.1 Admin Details Panel

This panel serves to enter contact information for the principal investigator.

2.1.2.2 Proposal Details Panel

This panel serves to enter the title and abstract of the proposal, its scientific category and to attach the scientific justification. Selecting if XMM–Newton time is requested is also done here.

Scientific Justification

At the bottom of the Proposal Details Panel, the button labelled **New Attachment** (see Figure 2) is used to attach the proposal’s scientific justification in PDF format.

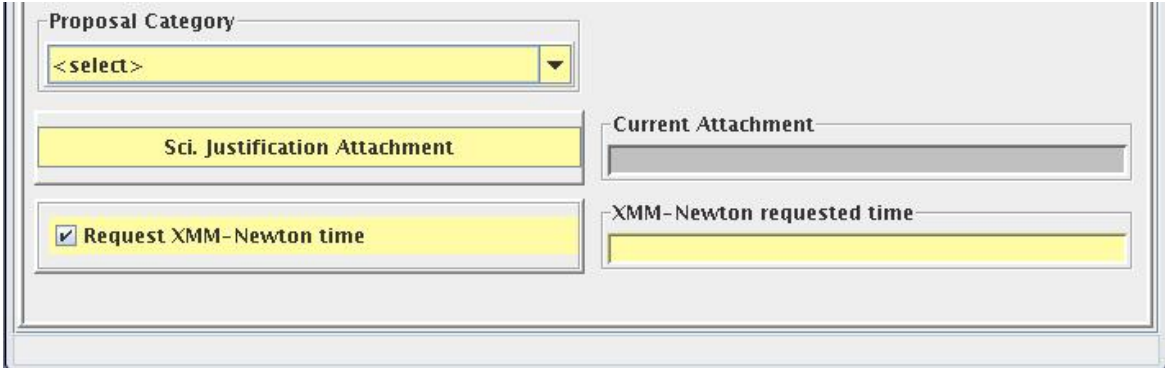


Figure 2 – The Proposal Details Panel (bottom part)

Having selected the attachment, the name of the file will be shown in the Current Attachment box of the Proposal Details Panel. Saving the proposal does not save the attachment, but the full path to access it. Hence, there is no need to re-attach the file every time the proposal is loaded, except if you have changed the location of the file. Clearly, before submitting, if you make changes to the scientific justification after the file has been attached to the proposal, you must override the previous attachment by attaching the new version.

There is no need to ever remove an attachment; only the last attachment is used. Selecting **Panel** → **Reset** will clear all fields and also remove the attachment.

Requesting XMM-Newton time

At the bottom of the panel, (see figure 2), there is a checkbox labelled **Request XMM-Newton time**. Selecting this option will enable the field XMM-Newton requested time, where the XMM-Newton requested time must be entered. (see chapter 3.1.5 from Mission Overview document for more details).

	INTEGRAL <i>Integral AO Tools</i> <i>Software User Manual</i>	Doc.No: INT/OAG/10-0330/Dc Issue: 1.0 Date: 15 March 2010 Page: 8 of 20
---	--	--

2.1.2.3 Observation Details Panel

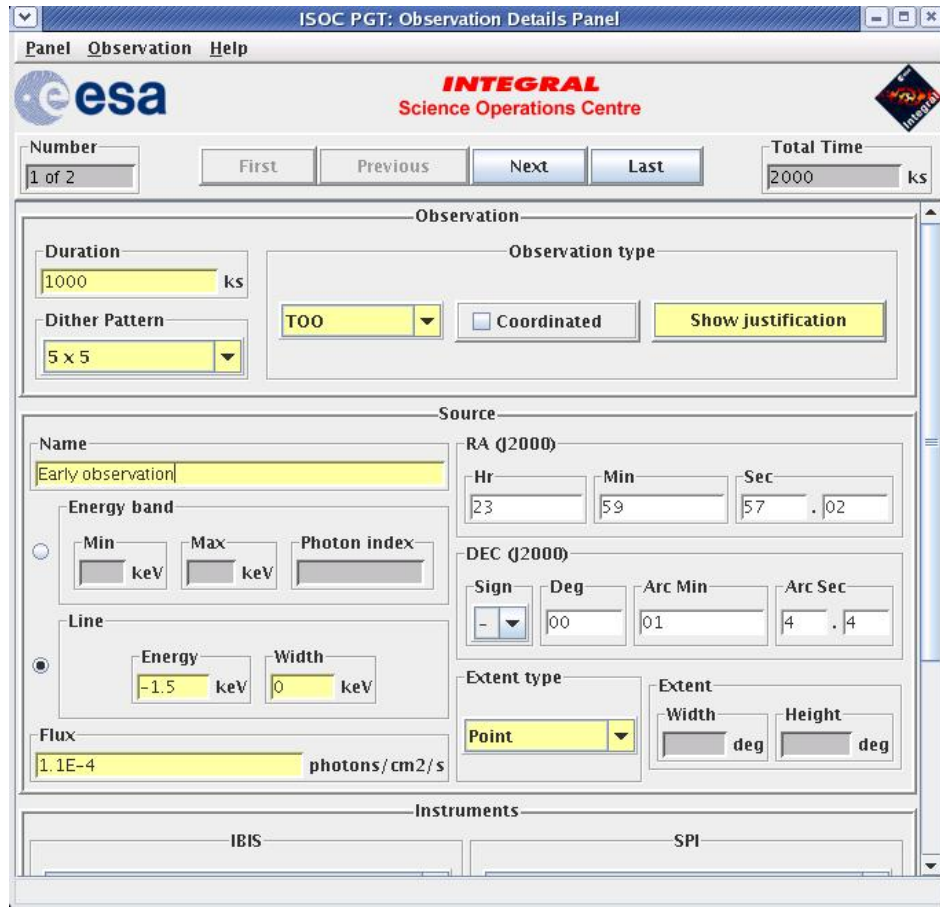
This panel serves to enter the technical details of each observation included in the proposal (see Figure 3).

Each observation in a proposal is numbered sequentially, as shown in the **Number** field on the left of the tool bar at the top of the Observation Details Panel. Here, you can see the number of the currently displayed observation and the total number of observations in the proposal.

In the **Observation** section of the panel, the **Duration** must be entered, and the **Dither pattern** and **Observation type** must be selected from the drop down menus. If a custom dither is required, then the pattern details must be provided in the scientific justification. There are three types of observations: Normal, Fixed Time and TOO, and a flag to identify the observation as coordinated. For all observations other than Normal, you must click on the **Show justification** button and enter the details of the observation. These should include a short justification for Fixed Time or TOO observations, or an explanation of how the observation is to be coordinated with other observatories, and will help in the evaluation of the proposal as well as with the planning of the observation. On the other hand, it is not possible to mix TOO observations with Normal or Fixed Time ones into the same proposal.

In the **Source** section of the panel, the name of the source entered in the **Name** field is checked against the Simbad, NED and VIZIER astronomical databases when pressing the “Check Proposal” button in the Main Panel. If the source name is not found, (i.e. because it is unknown) a warning will appear in the Check Panel. The coordinates of the source specified in RA and DEC (J2000), are used as the centre of the dither pattern unless it is a custom dither.

In addition to the two menu items that appear on all PGT panels, namely **Panel** and **Help**, the Observation Details Panel has another one labelled **Observation** (see Figure 4). Under this menu item, you can perform a number of actions: **add** a new observation (the display will show the new observation), **delete**, **duplicate** or **check** the currently displayed observation and **go to** a particular observation. **copy n**, makes “n” copies of the current observation, and **delete n**, deletes the range of observations specified. Finally, **import source list** allows importing a list of sources from a text file which format uses tab character between the source name and the coordinates (RA (J2000) hr:min:sec, DEC (J2000) deg:arcmin:arcsec), or by entering these fields directly into the table. Using the button “Generate Observations” will create as many identical observations as sources in the list (see Figure 5).



ISOC PGT: Observation Details Panel

Panel **Observation** Help

esa **INTEGRAL** Science Operations Centre

Number: 1 of 2 | First | Previous | Next | Last | Total Time: 2000 ks

Observation

Duration: 1000 ks | Observation type: **TOO** | Coordinated | Show justification

Dither Pattern: 5 x 5

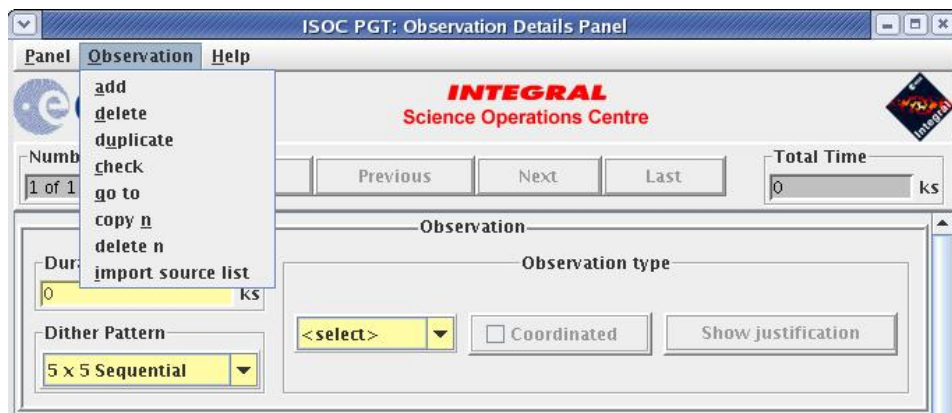
Source

Name: Early observation | RA (J2000): Hr: 23, Min: 59, Sec: 57.02 | DEC (J2000): Sign: -, Deg: 00, Arc Min: 01, Arc Sec: 4.4 | Extent type: Point | Extent: Width: , Height: | Energy band: Min: , Max: , Photon index: | Line: Energy: -1.5 keV, Width: 0 keV | Flux: 1.1E-4 photons/cm2/s

Instruments

IBIS | SPI

Figure 3 - The Observation Details Panel (upper part)



ISOC PGT: Observation Details Panel

Panel **Observation** Help

esa **INTEGRAL** Science Operations Centre

Number: 1 of 1 | Previous | Next | Last | Total Time: 0 ks

Observation

Observation type: <select> | Coordinated | Show justification

Dither Pattern: 5 x 5 Sequential

Observation Menu:

- add
- delete
- duplicate
- check
- go to
- copy n
- delete n
- import source list

Figure 4 - The Observation Menu

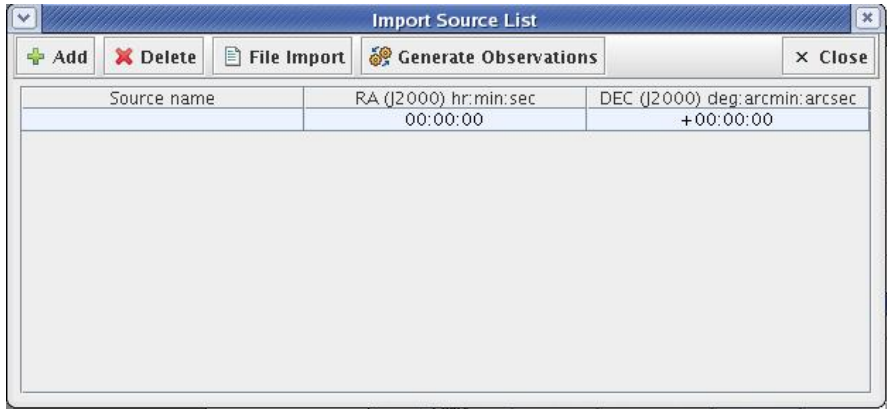


Figure 5 – Import source list

2.1.2.4 Data Rights Details Panel

This panel serves to claim data rights on specified observations (see Figure 6). They can be automatically generated from the observations list or they can be manually inserted using the fields in the panel. If no data rights are specified, the data will be considered as **public** and a warning will be shown when checking the proposal. As the Observation Details Panel, the Data Rights Details Panel has also a menu option named **Data rights** (see Figure 7) in addition to the **P**anel and **H**elp menu items. It allows performing a number of actions: **a**dd new data rights (the display will show the new data rights), **d**el~~e~~te, **d**uplicate or **c**heck the currently displayed data rights and **g**o to a particular one. **c**opy **n**, makes “n” copies of the current data rights, and **d**el~~e~~te **n**, deletes the range of data rights specified. **i**mp~~o~~rt source list allows importing a list of sources from a text file which format uses tab character between the source name and the coordinates (RA (J2000) hr:min:sec, DEC (J2000) deg:arcmin:arcsec), or by entering these fields directly into the table. Using the button “Generate Data Rights” will create as many identical data rights as sources in the list. Finally, **g**enerate data rights from observations will automatically create as many data rights as observations are included in the proposal, **d**eleting the current data rights that might have been created until that moment.

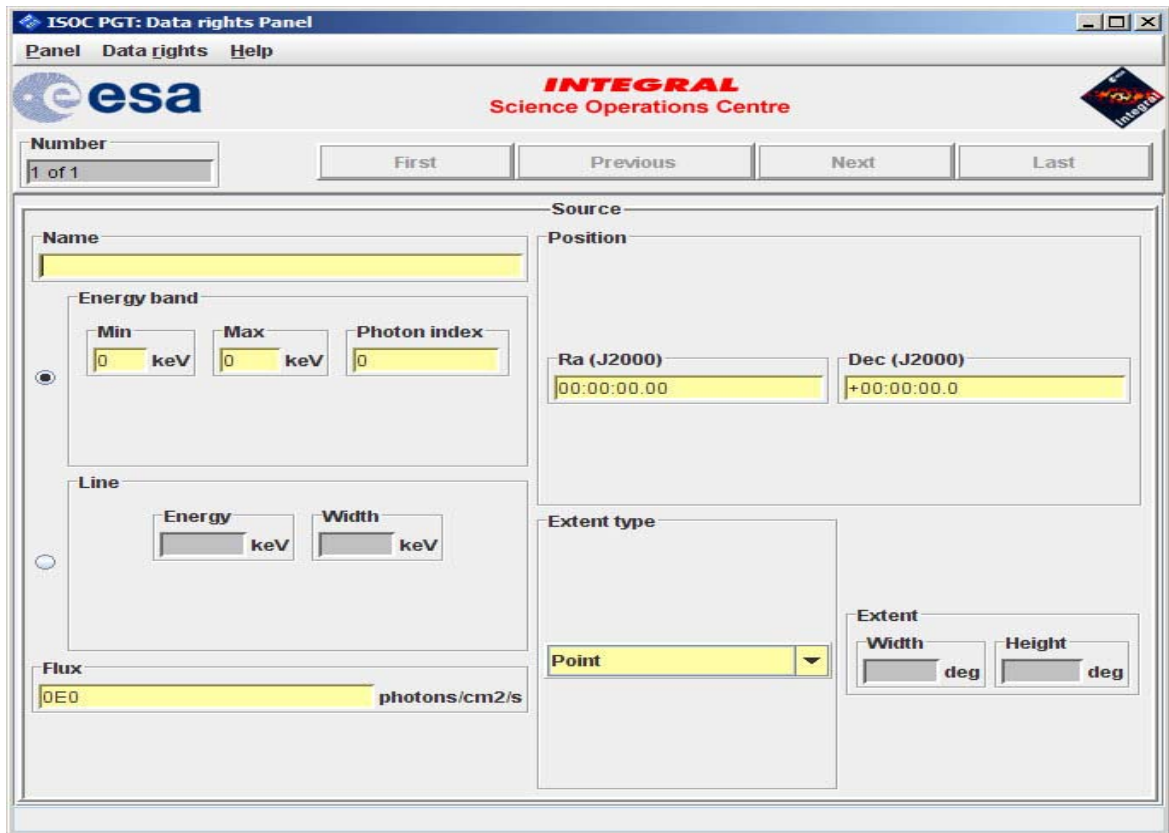


Figure 6 - The Data Rights Details Panel (upper part)

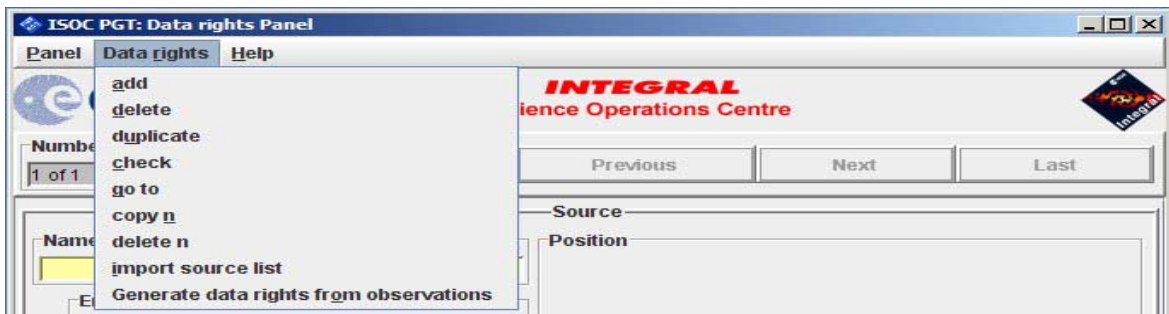


Figure 7 - The Data Rights menu

2.2 Saving, loading and printing

2.2.1 Saving

To save a proposal at any time, select **File** → **Save** in the menu of the Main Panel (see Figure 1).

The save functionality results in a well-formed XML file, the format that was introduced with pgt's previous edition.

2.2.2 Loading

To load a saved proposal, select **File** → **Open** in the menu of the Main Panel.

The load functionality will ask for an xml file. If you do not have the xml version of your old proposal you can ask for it by sending an email to the ISOC Helpdesk (<mailto:inthelp@sciops.esa.int>) stating that you would like a copy of your proposal in xml format referring to it with the corresponding *Proposal ID*.

If you modify the xml file, it might not be a valid PGT xml file any more and you would not be able to load your proposal.

2.2.3 Printing

To print a proposal or parts of it, first choose the printing options by selecting **File** → **Print** → **Options** in the menu of the Main Panel. This will open the *Print Options* dialog box (see Figure 8).

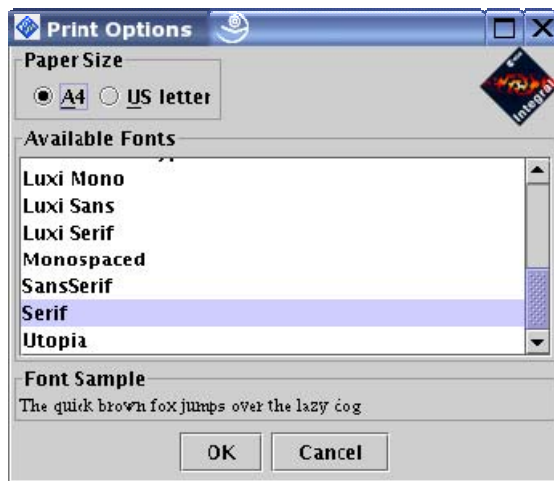


Figure 8 - The Print Options dialogue

Two paper sizes are supported, A4 and US letter. Click on the appropriate button at the top of the dialogue to choose the paper size. The list of fonts from which you can select will appear below.

After having selected the paper size and font, set them by clicking **OK**, or **Cancel** to disregard the selection and close the dialogue.

To print the *entire proposal*, select **File** → **Print** → **Proposal** in the menu of the Main Panel. A Print dialogue will appear and allow you to select a destination (printer or file) and start the print job. The exact appearance of this dialogue will depend on the platform you are using.

The administrative details and the proposal details can be printed individually by selecting **Panel** → **Print** in the menu bar of the corresponding panel.

Observation details can be printed by selecting **Panel** → **Print** → **All Observations** to print all the observations, or by selecting **Panel** → **Print** → **Current Observation** to print an individual observation. To print a summary of all the observations in the proposal (one observation per line), select **Panel** → **Print** → **Summary**.

2.3 Submitting a proposal to ISOC

The PGT allows you to send your proposal electronically to the ISOC. To do this, your computer must be connected to the Internet.

2.3.1 Submitting for the first time

Clicking the **Submit Proposal to ISOC** button in the lower part of the Main Panel (see Figure 1) starts the submission process. PGT will first check your proposal. If it fails any checks, the submission process will be aborted and you will need to correct the errors shown in the **Failed Checks Panel**. If it passes the checks, there might be also some warnings shown in the Failed Checks Panel, but they will not prevent from submitting the proposal. Then, a panel is displayed showing a summary of the proposal (see Figure 9). Click **Submit** to send the proposal, **Cancel** to abort the submission.

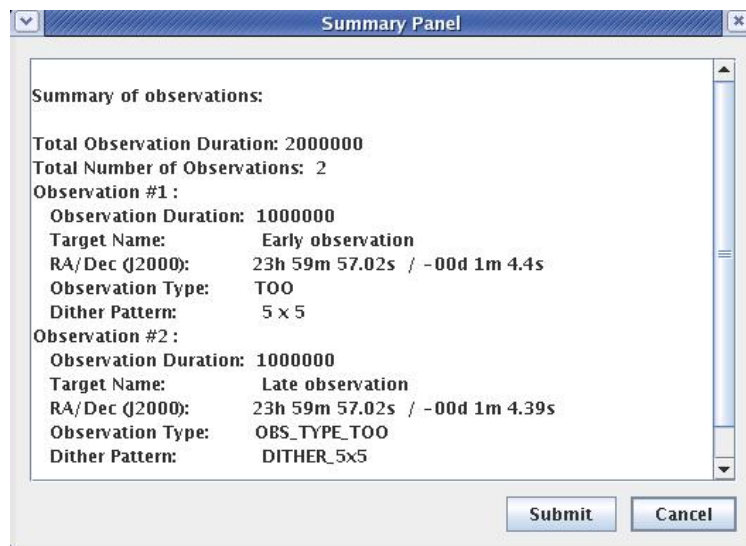


Figure 9 - The Summary Panel

By clicking **Submit**, PGT will attempt to establish a connection with a computer at ISOC that has been set up to receive proposals. Once it is established, the proposal will be sent. If the proposal was sent successfully, the following dialogue will be displayed (Figure 10).

	INTEGRAL <i>Integral AO Tools</i> <i>Software User Manual</i>	Doc.No: INT/OAG/10-0330/Dc Issue: 1.0 Date: 15 March 2010 Page: 14 of 20
---	--	---

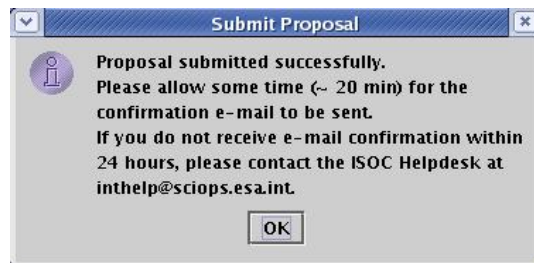


Figure 10 - Successful Submission dialogue

Upon receipt of a proposal, the computer at the ISOC performs further checks and sends a receipt confirmation e-mail message. This e-mail can take some time (around 20 min.). If the proposal passes the checks, a *Proposal ID* will be assigned to it and included in the message. If it does not, this will be stated in the email.

2.3.2 Resubmitting a proposal

If you realise you have made a mistake, or simply want to make changes to a proposal you have already submitted, you can resubmit a proposal using the *Proposal ID*.

Make the changes you wish to make to the proposal and enter the *Proposal ID* in the box provided at the bottom of the Main Panel (see Figure 1). The **Resubmit Proposal to ISOC** button will be enabled and the **Submit Proposal to ISOC** button will be disabled. When you click the **Resubmit Proposal to ISOC** button, PGT will repeat the proposal submission process, described above.

The computer at ISOC will use the *Proposal ID* entered to find the previous version of the proposal in the ISOC database. If it is found, the resubmitted proposal will replace the previous one. If it is not found, the receipt confirmation email message will inform you of that fact (make sure the *Proposal ID* is correct).

In either of these cases, simply submit the proposal as a new one, without specifying an ID. You will then be given a new ID that is compatible with your selection.

PGT cannot prevent a proposer from submitting the same proposal multiple times as new proposals. A new *Proposal ID* will be generated for each new submission. Therefore, be cautious when resubmitting a modified version of the same proposal.

2.3.3 Obtaining a copy of a submitted proposal from ISOC

After submitting a proposal, it should be saved (see section 0) for future reference, and to allow for the possibility of resubmitting the proposal at a later date.

You can also request a copy of your proposal by sending an email to the ISOC Helpdesk (<mailto:inthelp@sciops.esa.int>) stating that you would like a copy of your proposal, referring to it with the corresponding *Proposal ID*. It will be emailed to you at the address specified in the Admin Details Panel of PGT. If another email address should be used, specify this in the message.



INTEGRAL
Integral AO Tools
Software User Manual

Doc.No: INT/OAG/10-0330/Dc
Issue: 1.0
Date: 15 March 2010
Page: 15 of 20

3 Observing Time Estimator (OTE)

The Observing Time Estimator (OTE) is a web-based tool running at the INTEGRAL Science Operations Centre at ESAC and made available to potential observers. Below is a description of OTE version 5. Improvements over the previous version includes a considerable increase in speed and slight changes in presentation. The underlying instrument response data is kept up to date for each AO.

The purpose of OTE is to give users a reliable guide as to the feasibility of their proposed observation. For example, given specific source characteristics (spectrum, flux), OTE computes the signal-to-noise ratio (S/N) achievable in a given observing time, or conversely, the integration time needed to achieve a desired S/N.

OTE can currently be used only for INTEGRAL's main instruments: SPI and IBIS. Not for JEM-X and OMC (interested users should refer to the JEM-X and OMC Observer's manual for details).

All INTEGRAL proposers shall use OTE in determining the duration of their proposed observations. Output of the OTE **only** will be used by ISOC during the technical feasibility assessment and during the proposal evaluation by TAC.

OTE is accessed via the ISOC web site, <http://integral.esac.esa.int>, under 'INTEGRAL Observation Tools'.

3.1 Using OTE

3.1.1 Input

- *Select an instrument:* SPI or IBIS.
- *Select continuum or line*
 - For a continuum calculation the user must set the lower and upper energies. The allowed range is 15 keV–10 MeV. OTE assumes a power law spectrum and the photon spectral index must be specified. If you wish to perform calculations for continuum, please make sure to read section 3.2.
 - For line, input the central energy and line width (FWHM). If the line is unresolved, a line width of 0.1 keV is sufficient.
- *Specify the S/N or the exposure time.*
- *Specify the source flux.*
 - This is the integrated broad-band flux, in units of photons $\text{cm}^{-2} \text{s}^{-1}$, in either the selected energy range (for the continuum) or integrated over the full width at zero intensity (FWZI) for a line. Beware! The continuum sensitivity curves in the SPI and IBIS Observer's manuals are presented using different units: monochromatic flux density, i.e., photons $\text{cm}^{-2} \text{s}^{-1} \text{keV}^{-1}$.
 - Enter the source position (optional) in either degrees or sexagesimal notation (J2000). OTE accesses the 2nd ISGRI catalogue and warns the user if there are any nearby bright

	INTEGRAL <i>Integral AO Tools</i> <i>Software User Manual</i>	Doc.No: INT/OAG/10-0330/Dc Issue: 1.0 Date: 15 March 2010 Page: 16 of 20
---	--	---

sources; a bright source in the partially coded field of view can severely deteriorate image quality.

- *Select the desired dither pattern.*
 - This will take into account the off-axis response of the instruments as INTEGRAL dithers: a very important effect for SPI but not for IBIS (staring or HEX are not recommended). We generally recommend the 5x5 dither pattern (see the IBIS and SPI Observer's Manuals).
- *Click the 'Query' button.*

3.1.2 Output

OTE returns:

- The original input values
- Any nearby bright source information (coordinates from the 3rd ISGRI catalogue)
- Warnings, if part of the selected energy band for the source calculation is outside the energy range of the selected instrument
- Calculated exposure time, or S/N for the entire input energy range (for continuum calculations) or for the FWZI (line calculations)
- For continuum calculations, the calculated exposure time, or S/N for the individual sub-bands used in the back-end calculations (see section 3.2). These may be useful, for example, for determining the energy above which the source fades into the background.

3.2 Continuum calculations: a note on energy ranges

While a broad energy range is allowed in the OTE input, the OTE back-end calculations themselves do not allow the use of a broad energy band, e.g., 20 keV to 10 MeV. The underlying algorithm in OTE calculates the *average* performance across a user defined continuum energy band given the flux of the source in that band. However, the sensitivity of the instruments can vary enormously over their energy ranges. In addition, the gamma-ray instruments can have very rapid changes in sensitivity in a comparatively small range of energies (especially around 511 keV). Also, many (most) gamma-ray sources exhibit steep spectra so that they are very much fainter at higher energies. Even for hard sources, including the highest energies will result in very low S/N due to the relatively high background at MeV energies, compared to the source flux.

For these reasons, in previous AOs, OTE was restricted to energy bands which are narrower than the entire instrumental bandpass. Of course the prospective observer may be in a situation where the continuum range of interest is rather wide. To allow this the front-end (GUI) of OTE allows the user to specify a wider band. OTE splits the input energy range into narrower sub-bands and, assuming a power law spectrum (with the flux and spectral index as user inputs), calculates the flux within each sub-band. It then performs individual calculations on these sub-bands, of the S/N, or observation duration, and finally combines these results into a global figure for the entire input energy band.



INTEGRAL
Integral AO Tools
Software User Manual

Doc.No:	INT/OAG/10-0330/Dc
Issue:	1.0
Date:	15 March 2010
Page:	17 of 20

3.3 Hints and warnings

(i) Units: Please be careful with units!

- Input and output time are in kiloseconds.
- All fluxes, both for lines and continua, should be given in units of photons $\text{cm}^{-2} \text{s}^{-1}$.

(ii) Prospective IBIS users should also note the following:

- The continuum range of interest can straddle the energy ranges of ISGRI and PICsIT and be only partially inside the energy range of one or both. If only one calculation is done for the entire range of interest, both detector arrays might report a poorer response than is truly available. If one does go beyond the energy range of a detector array, a warning is given.
- In such a case, we recommend calculating the broad-band flux for the energy range of interest covered by ISGRI and by PICsIT separately and combining the results later.

(iii) The contributions of Compton photons to the S/N or observing time are not considered.

	INTEGRAL <i>Integral AO Tools</i> <i>Software User Manual</i>	Doc.No: INT/OAG/10-0330/Dc Issue: 1.0 Date: 15 March 2010 Page: 18 of 20
---	--	---

4 Target Visibility Predictor (TVP)

The Target Visibility Predictor (TVP) is a web-based tool running at the INTEGRAL Science Operations Centre at ESAC and made available to potential observers.

TVP is used to determine when a source is visible to INTEGRAL. This is especially useful in determining whether INTEGRAL observations can be coordinated with other observatories, and if phase-dependent observations of binary systems, for example, can be performed.

TVP is accessed via the ISOC web site, <http://integral.esac.esa.int>, under ‘INTEGRAL Observation Tools’.

4.1 Viewing constraints

INTEGRAL celestial viewing constraints are defined by power and thermal constraints (Sun), as well as star-tracker blinding constraints (Sun, Earth and Moon). The viewing constraints used in this tool are such that the pointing direction of the spacecraft must be greater than 50 degrees away from the Sun and the anti-Sun and within 15 deg of the Earth's limb, or within 10 degrees of the Moon's limb.

Since the Earth and Lunar orbits can be predicted very accurately, it is also possible to predict when any part of the celestial sphere is visible to INTEGRAL.

4.2 How visibility is calculated

Sky visibility is calculated by dividing the sky into approximately rectangular cells of 10 x 10 degrees referred to as *skybins*. The visibility of each corner of a skybin is determined for every revolution in the mission, whenever INTEGRAL is above the Van Allen belts. If all four corners are simultaneously visible, that area of sky is deemed visible. The calculation is therefore (slightly) conservative. The results are stored in a *Data Base of Observable Bins* (DBOB), which contains the open and close times for every skybin during the mission, and the resulting available duration. This “open interval” never crosses revolution boundaries since science operations are not performed in the Van Allen belts around perigee.

4.3 Using TVP

4.3.1 Input

- *Source Name* (Optional) Entering the source name and pressing “Get Simbad Coordinates” will fill in RA and Dec coordinates. If the name is not found in the Simbad database you will need to fill in RA and Dec.
- *RA and Dec (J2000)* In either of the formats shown on the web page.
- *Dither pattern* For hexagonal or 5x5 dither patterns, the TVP checks whether all points in the dither pattern are visible, not just the centre.
- *Start and End date* For the period of interest. Defaults are start and end dates of the current AO cycle. Boundaries are start of the mission and end of the current AO cycle,



INTEGRAL
Integral AO Tools
Software User Manual

Doc.No: INT/OAG/10-0330/Dc
Issue: 1.0
Date: 15 March 2010
Page: 19 of 20

although it is strongly recommended to cover only the period of interest. Input should be in the format shown on the web page.

- *Minimum Duration* In seconds. TVP will only return visibility of bins open for longer than this value. In the DBOB, bins can be open for as short as one second (if the bin is at the edge of the Earth or Moon constraint). However, the short term observation scheduling system would never attempt to use such a bin. We suggest 1800 seconds as a reasonable value, which currently is the minimum exposure time.

4.3.2 Output

The output of TVP is a summary of the input parameters, and a time-ordered list of when the source (skybin) is visible. Each line in the list contains start and end times (UTC), and duration of visibility (seconds). Gaps of eight hours between successive visibility periods are usually due to Van Allen belt transit. Shorter gaps are due to Earth or Moon constraints and longer gaps to Sun/anti-Sun constraints.

	INTEGRAL <i>Integral AO Tools</i> <i>Software User Manual</i>	Doc.No: INT/OAG/10-0330/Dc Issue: 1.0 Date: 15 March 2010 Page: 20 of 20
---	--	---

5 Exposure Map Tool (EMT)

The Exposure Map Tool (EMT) is a web-based tool running at the INTEGRAL Science Operations Centre at ESAC and made available to potential observers.

EMT is used to get the exposure time at a given point in the sky. The exposure time is the time INTEGRAL has observed this point according to an exposure map (IBIS or SPI observation maps).

EMT is accessed via the ISOC web site, <http://integral.esac.esa.int>, under ‘INTEGRAL Observation Tools’.

5.1 Using EMT

5.1.1 Input

- *Exposure map* Select the desired exposure map from the list
- *Source Name* (Optional) Entering the source name and pressing “Get Simbad Coordinates” will fill in RA and Dec coordinates. If the name is not found in the Simbad database you will need to fill in RA and Dec
- *RA and Dec* (J2000) In either of the formats shown on the web page.

5.1.2 Output

The output of TVP is a summary of the input parameters, and the total time INTEGRAL has observed the target together with the details of the exposure map used (POS and date).