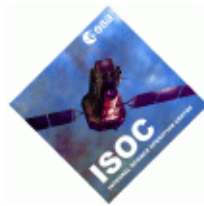


# ***INTEGRAL***

**Science Operations Centre**

## **Announcement of Opportunity for Observing Proposals (AO-6)**



### **Integral AO Tools Software User Manual**

INT/OAG/08-0299/Dc

Issue 1.0

10 March 2008

Prepared by S. De Castro

Authorised by P. Kretschmar

	<p><b><i>INTEGRAL</i></b></p> <p><i>Integral AO Tools</i></p> <p><i>Software User Manual</i></p>	<p><b>Doc.No:</b> INT/OAG/08-0299/Dc</p> <p><b>Issue:</b> 1.0</p> <p><b>Date:</b> 10 March 2008</p> <p><b>Page:</b> ii</p>
---	--	--

## Document Status Sheet

Document Title	Integral AO Tools Software User Manual		
Reference No:	INT/OAG/08-0299/Dc		
Issue	Revision	Date	Reason for change
1	0	10 March 2008	Issue for AO-6

Based on inputs from P. Balm and G. Belanger (ISOC/ESAC).

	<p style="text-align: center;"><b><i>INTEGRAL</i></b>  <i>Integral AO Tools</i>  <i>Software User Manual</i></p>	<p><b>Doc.No:</b> INT/OAG/08-0299/Dc  <b>Issue:</b> 1.0  <b>Date:</b> 10 March 2008  <b>Page:</b> iii</p>
---	--	---

## Table of Contents

1	Introduction .....	5
2	Proposal Generation Tool (PGT) .....	6
2.1	Entering data.....	6
2.1.1	The Main Panel .....	6
2.1.2	The Admin, Proposal and Observation Details Panels .....	6
2.2	Saving, loading and printing.....	10
2.2.1	Saving .....	10
2.2.2	Loading .....	10
2.2.3	Printing.....	10
2.3	Submitting a proposal to ISOC.....	11
2.3.1	Submitting for the first time.....	11
2.3.2	Resubmitting a proposal .....	12
2.3.3	Obtaining a copy of a submitted proposal from ISOC .....	13
3	Observing Time Estimator (OTE).....	14
3.1	Using OTE.....	14
3.1.1	Input .....	14
3.1.2	Output .....	15
3.2	Continuum calculations: a note on energy ranges.....	15
3.3	Hints and warnings .....	16
4	Target Visibility Predictor (TVP) .....	17
4.1	Viewing constraints .....	17
4.2	How visibility is calculated .....	17
4.3	Using TVP .....	17
4.3.1	Input.....	17
4.3.2	Output .....	18



	<p style="text-align: center;"><b><i>INTEGRAL</i></b></p> <p style="text-align: center;"><i>Integral AO Tools</i></p> <p style="text-align: center;"><i>Software User Manual</i></p>	<p><b>Doc.No:</b> INT/OAG/08-0299/Dc</p> <p><b>Issue:</b> 1.0</p> <p><b>Date:</b> 10 March 2008</p> <p><b>Page:</b> 5 of 18</p>
---	--	---

## 1 Introduction

The purpose of this document is to describe the use of the software tools made available to observers who wish to submit a proposal for INTEGRAL observations.

The Integral AO Tools provided by the INTEGRAL Science Operations Centre (ISOC) include: the Proposal Generation Tool (PGT), the Observation Time Estimator (OTE) and the Target Visibility Predictor (TVP). The latest version of these tools together with the associated documentation is available from the ISOC web page: <http://integral.esac.esa.int>.

If you discover a problem with any of the tools, please read the Frequently Asked Questions (FAQ) at <http://integral.esac.esa.int/FAQ>. If you do not find the answer to your question, please contact the INTEGRAL Helpdesk: <mailto:inthehelp@sciops.esa.int>.

	<p style="text-align: center;"><b>INTEGRAL</b></p> <p style="text-align: center;"><i>Integral AO Tools</i></p> <p style="text-align: center;"><i>Software User Manual</i></p>	<p><b>Doc.No:</b> INT/OAG/08-0299/Dc</p> <p><b>Issue:</b> 1.0</p> <p><b>Date:</b> 10 March 2008</p> <p><b>Page:</b> 6 of 18</p>
---	---	---

## 2 Proposal Generation Tool (PGT)

PGT can be downloaded from: <http://integral.esac.esa.int/isoc/operations/html/pgtao6>.

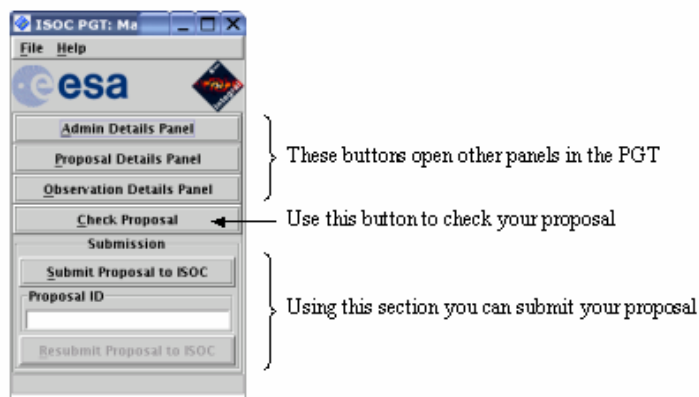
Installation instructions and answers to FAQ are also provided there.

Once PGT has been successfully installed, it is launched by running an executable script called 'pgt' on UNIX-like platforms, or by double-clicking on the desktop icon on Windows systems.

### 2.1 Entering data

#### 2.1.1 The Main Panel

When the PGT is launched, the **Main Panel** is displayed (Figure 1). This panel serves as the parent to the **Admin Details Panel**, the **Proposal Details Panel** and the **Observation Details Panel**, all of which can be accessed by clicking the appropriate button found in the top half of the Main Panel.



*Figure 1 - The Main Panel of PGT*

Below these three buttons, there is a **Check Proposal** button that initiates a series of checks on the proposal and lists anything that is wrong or incomplete. This check can be performed at any time.

The lower half of the Main Panel controls proposal submission (or resubmission). Clicking the **Submit Proposal to ISOC** button, will send an electronic version of the proposal to the ISOC.

#### 2.1.2 The Admin, Proposal and Observation Details Panels

PGT provides three details panels that encompass all the information about the proposal. These include: administrative details, proposal details and observation details, and are accessed by clicking the corresponding button in the Main Panel. All fields, in any panel, that have a light yellow background are mandatory and cannot be left blank.

##### 2.1.2.1 Admin Details Panel

This panel serves to enter contact information for the principal investigator.

### 2.1.2.2 Proposal Details Panel

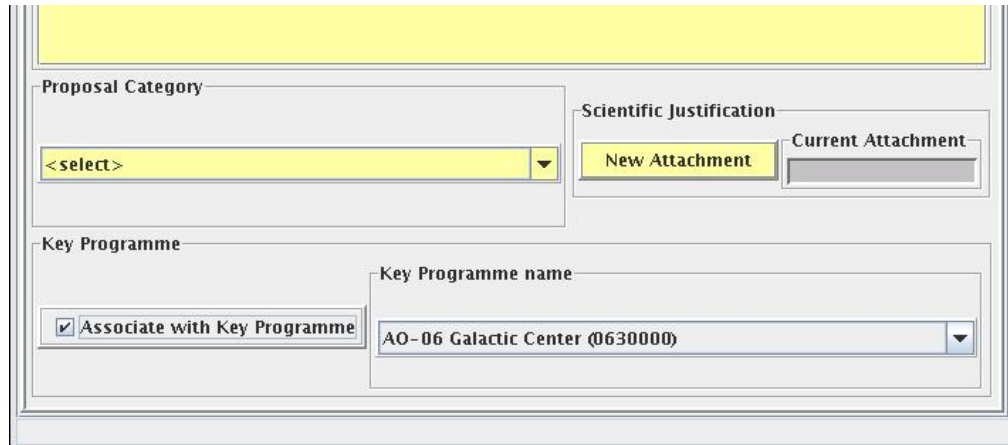
This panel serves to enter the title and abstract of the proposal, its scientific category and to attach the scientific justification. Selecting to associate the proposal with a Key Programme is done here.

#### *Association of a proposal with a Key Programme*

At the bottom of the panel, (see figure 2), there is a checkbox labelled **Associate with Key Programme**. Selecting this option will associate the proposal with a Key Programme (KP). Such a proposal is referred to as a KP subscription by ISOC. See document “AO-6 Key Programmes and Associated Observations” for details on the planned Key Programmes.

#### *Scientific Justification*

At the bottom of the Proposal Details Panel, the button labelled **New Attachment** (see Figure 2) is used to attach the proposal’s scientific justification in PDF format.



*Figure 2 – The Proposal Details Panel (bottom part)*

Having selected the attachment, the name of the file will be shown in the Current Attachment box of the Proposal Details Panel. Saving the proposal does not save the attachment, but the full path to access it. Hence, there is no need to re-attach the file every time the proposal is loaded, except if you have changed the location of the file. Clearly, before submitting, if you make changes to the scientific justification after the file has been attached to the proposal, you must override the previous attachment by attaching the new version.

There is no need to ever remove an attachment; only the last attachment is used. Selecting **Panel** → **Reset** will clear all fields and also remove the attachment.

### 2.1.2.3 Observation Details Panel

This panel serves to enter the technical details of each observation included in the proposal (see Figure 3).

	<p style="text-align: center;"><b>INTEGRAL</b></p> <p style="text-align: center;"><i>Integral AO Tools</i></p> <p style="text-align: center;"><i>Software User Manual</i></p>	<p><b>Doc.No:</b> INT/OAG/08-0299/Dc</p> <p><b>Issue:</b> 1.0</p> <p><b>Date:</b> 10 March 2008</p> <p><b>Page:</b> 8 of 18</p>
---	---	---

Each observation in a proposal is numbered sequentially, as shown in the **Number** field on the left of the tool bar at the top of the Observation Details Panel. Here, you can see the number of the currently displayed observation and the total number of observations in the proposal.

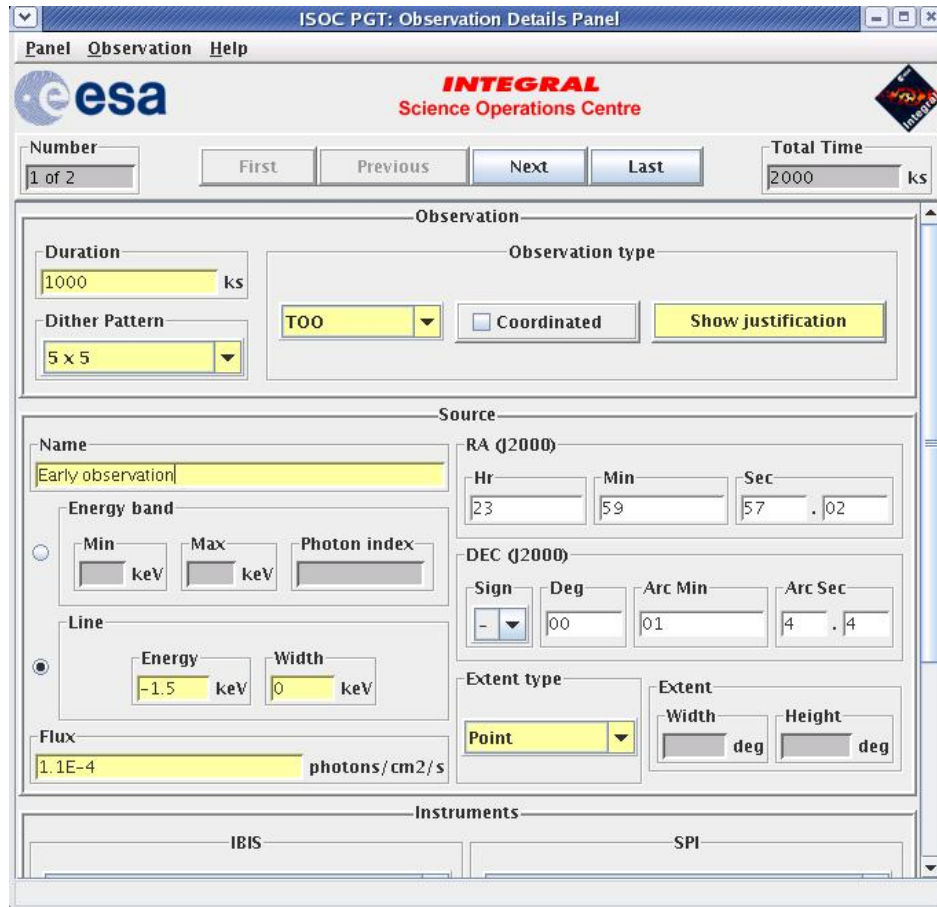
In the **Observation** section of the panel, the **Duration** must be entered, and the **Dither pattern** and **Observation type** must be selected from the drop down menus. If a custom dither is required, then the pattern details must be provided in the scientific justification. There are three types of observations: Normal, Fixed Time and TOO, and a flag to identify the observation as coordinated. For all observations other than Normal, you must click on the **Show justification** button and enter the details of the observation. These should include a short justification for Fixed Time or TOO observations, or an explanation of how the observation is to be coordinated with other observatories, and will help in the evaluation of the proposal as well as with the planning of the observation.

In the **Source** section of the panel, the name of the source entered in the **Name** field is checked against the Simbad, NED and VIZER astronomical databases. If the source name is not found, (i.e. because it is unknown) a warning will appear. The coordinates of the source specified in RA and DEC (J2000), are used as the centre of the dither pattern unless it is a custom dither.

In addition to the two menu items that appear on all PGT panels, namely **Panel** and **Help**, the Observation Details Panel has another one labelled **Observation** (see Figure 4). Under this menu item, you can perform a number of actions: **Add** a new observation (the display will show the new observation), **Delete**, **Duplicate** or **Check** the currently displayed observation and **Go To** a particular observation. Finally, **Copy n**, makes “n” copies of the current observation. and **Delete n**, deletes the range of observations specified.

If the proposal is associated with a KP, only the target source information has to be provided because all instrument settings are defined in the KP. For this reason, some fields in the Observation Details Panel are disabled for KP subscriptions.





ISOC PGT: Observation Details Panel

Panel Observation Help

**esa** **INTEGRAL**  
Science Operations Centre

Number: 1 of 2 | First | Previous | Next | Last | Total Time: 2000 ks

**Observation**

Duration: 1000 ks  
Dither Pattern: 5 x 5  
Observation type: TOO | Coordinated | Show justification

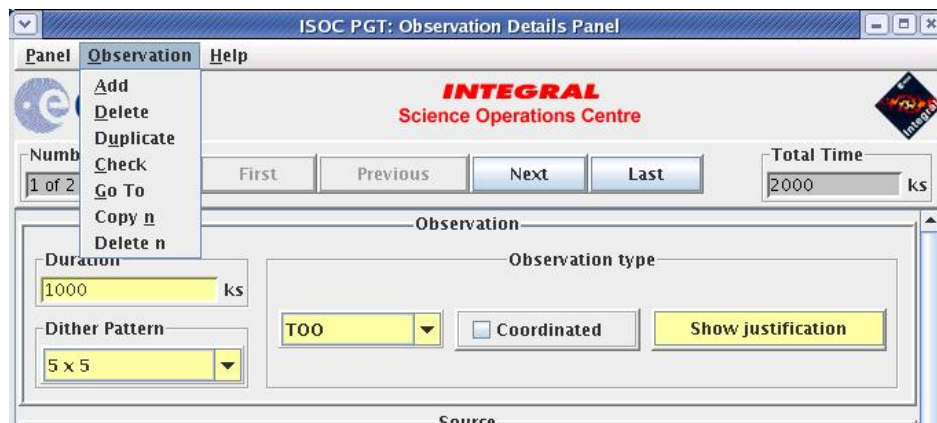
**Source**

Name: Early observation  
Energy band: Min: keV, Max: keV, Photon index:   
Line: Energy: -1.5 keV, Width: 0 keV  
Flux: 1.1E-4 photons/cm<sup>2</sup>/s  
RA (J2000): Hr: 23, Min: 59, Sec: 57.02  
DEC (J2000): Sign: -, Deg: 00, Arc Min: 01, Arc Sec: 4.4  
Extent type: Point | Extent: Width: deg, Height: deg

**Instruments**

IBIS | SPI

Figure 3 - The Observation Details Panel (upper part)



ISOC PGT: Observation Details Panel

Panel **Observation** Help

**esa** **INTEGRAL**  
Science Operations Centre

Number: 1 of 2 | First | Previous | Next | Last | Total Time: 2000 ks

**Observation**

Duration: 1000 ks  
Dither Pattern: 5 x 5  
Observation type: TOO | Coordinated | Show justification

**Source**

Menu: Add, Delete, Duplicate, Check, Go To, Copy n, Delete n

Figure 4 - The Observation Menu

## 2.2 Saving, loading and printing

### 2.2.1 Saving

To save a proposal at any time, select **File** → **Save** in the menu of the Main Panel (see [Figure 1](#)).

The save functionality has changed from previous versions of PGT. Now, it will save your proposal in a well-formed xml file.

### 2.2.2 Loading

To load a saved proposal, select **File** → **Open** in the menu of the Main Panel.

The load functionality has changed from previous versions of PGT. Now, it will ask for a xml file, so you will need to generate it, using the save button, or ask to ISOC support team by sending an email to the ISOC Helpdesk (<mailto:inthelp@sciops.esa.int>) stating that you would like a copy of your proposal in xml format referring to it with the corresponding *Proposal ID*.

If you modify the xml file, it might not be a valid PGT xml file and you would not be able to load your proposal.

### 2.2.3 Printing

To print a proposal or parts of it, first choose the printing options by selecting **File** → **Print** → **Options** in the menu of the Main Panel. This will open the *Print Options* dialog box (see [Figure 5](#)).

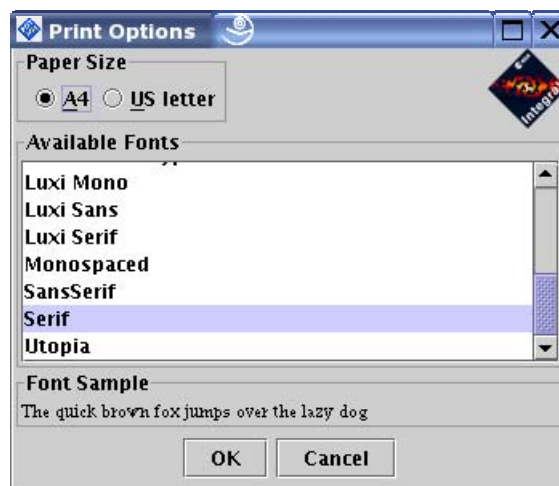


Figure 5 - The Print Options dialogue

Two paper sizes are supported, A4 and US letter. Click on the appropriate button at the top of the dialogue to choose the paper size. The list of fonts from which you can select will appear below.

After having selected the paper size and font, set them by clicking **OK** or **Cancel** to disregard de selection and close the dialogue.

To print the *entire proposal*, select **File** → **Print** → **Proposal** in the menu of the Main Panel. A Print dialogue will appear and allow you to select a destination (printer or file) and start the print job. The exact appearance of this dialogue will depend on the platform you are using.

The administrative details and the proposal details can be printed individually by selecting **Panel** → **Print** in the menu bar of the corresponding panel.

Observation details can be printed by selecting **Panel** → **Print** → **All Observations** to print all the observations, or by selecting **Panel** → **Print** → **Current Observation** to print an individual observation. To print a summary of all the observations in the proposal (one observation per line), select **Panel** → **Print** → **Summary**.

## 2.3 Submitting a proposal to ISOC

The PGT allows you to send your proposal electronically to the ISOC. To do this, your computer must be connected to the Internet.

### 2.3.1 Submitting for the first time

Clicking the **Submit Proposal to ISOC** button in the lower part of the Main Panel (see Figure 1) starts the submission process. PGT will first check your proposal. If it fails any checks, the submission process will be aborted and you will need to correct the errors shown in the **Failed Checks Panel**. If it passes the checks, a panel is displayed showing a summary of the proposal (see Figure 6). Click **Submit** to send the proposal, **Cancel** to abort the submission.

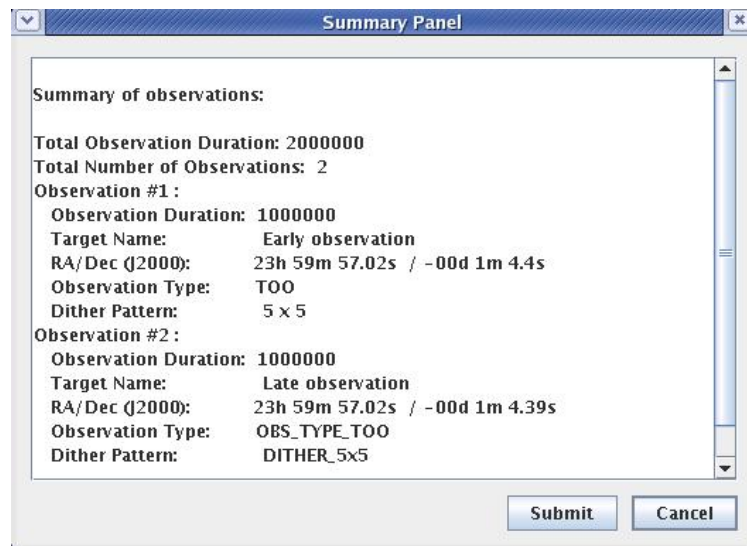


Figure 6 - The Summary Panel

	<p style="text-align: center;"><b>INTEGRAL</b></p> <p style="text-align: center;"><i>Integral AO Tools</i></p> <p style="text-align: center;"><i>Software User Manual</i></p>	<p><b>Doc.No:</b> INT/OAG/08-0299/Dc</p> <p><b>Issue:</b> 1.0</p> <p><b>Date:</b> 10 March 2008</p> <p><b>Page:</b> 12 of 18</p>
---	---	--

By clicking **Submit**, PGT will attempt to establish a connection with a computer at ISOC that has been set up to receive proposals. Once it is established, the proposal will be sent. If the proposal was sent successfully, the following dialogue will be displayed (Figure 7).

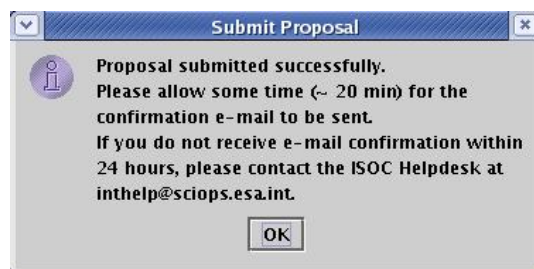


Figure 7 - Successful Submission dialogue

Upon receipt of a proposal, the computer at the ISOC performs further checks and sends a receipt confirmation email message. This e-mail can take some time (around 20 min.). If the proposal passes the checks, a *Proposal ID* will be assigned to it and included in the message. If it does not, this will be stated in the email.

### 2.3.2 Resubmitting a proposal

If you realise you have made a mistake, or simply want to make changes to a proposal you have already submitted, you can resubmit a proposal using the *Proposal ID*.

Make the changes you wish to make to the proposal and enter the *Proposal ID* in the box provided at the bottom of the Main Panel (see Figure 1). The **Resubmit Proposal to ISOC** button will be enabled and the **Submit Proposal to ISOC** button will be disabled. When you click the **Resubmit Proposal to ISOC** button, PGT will repeat the proposal submission process, described above.

The computer at ISOC will use the *Proposal ID* entered to find the previous version of the proposal in the ISOC database. If it is found, the resubmitted proposal will replace the previous one. If it is not found, the receipt confirmation email message will inform you of that fact (make sure the *Proposal ID* is correct).

It is **NOT** permitted to change the status of the proposal from one that is associated with a KP to one that is not or vice versa: the **Associate to Key Programme** checkbox on the Proposal Details Panel must remain in its original state in the resubmission.

It is **NOT** permitted to change the KP with which the proposal is associated.

In either of these cases, simply submit the proposal as a new one, without specifying an ID. You will then be given a new ID that is compatible with your selection.

PGT cannot prevent a proposer from submitting the same proposal multiple times as new proposals. A new *Proposal ID* will be generated for each new submission. Therefore, be cautious when resubmitting a modified version of the same proposal.

	<p style="text-align: center;"><b><i>INTEGRAL</i></b></p> <p style="text-align: center;"><i>Integral AO Tools</i></p> <p style="text-align: center;"><i>Software User Manual</i></p>	<p><b>Doc.No:</b> INT/OAG/08-0299/Dc</p> <p><b>Issue:</b> 1.0</p> <p><b>Date:</b> 10 March 2008</p> <p><b>Page:</b> 13 of 18</p>
---	--	--

### 2.3.3 Obtaining a copy of a submitted proposal from ISOC

After submitting a proposal, it should be saved (see section 2.2) for future reference, and to allow for the possibility of resubmitting the proposal at a later date.

You can also request a copy of your proposal by sending an email to the ISOC Helpdesk (<mailto:inthelp@sciops.esa.int>) stating that you would like a copy of your proposal, referring to it with the corresponding *Proposal ID*. It will be emailed to you at the address specified in the Admin Details Panel of PGT. If another email address should be used, specify this in the message.

	<p style="text-align: center;"><b>INTEGRAL</b></p> <p style="text-align: center;"><i>Integral AO Tools</i></p> <p style="text-align: center;"><i>Software User Manual</i></p>	<p>Doc.No: INT/OAG/08-0299/Dc</p> <p>Issue: 1.0</p> <p>Date: 10 March 2008</p> <p>Page: 14 of 18</p>
---	---	--

### 3 Observing Time Estimator (OTE)

The Observing Time Estimator (OTE) is a web-based tool running at the INTEGRAL Science Operations Centre at ESAC and made available to potential observers. Below is a description of OTE version 5. Improvements over the previous version includes a considerable increase in speed and slight changes in presentation. The underlying response data is kept up to date for each AO.

The purpose of the OTE is to give users a reliable guide as to the feasibility of their proposed observation. For example, given specific source characteristics (spectrum, flux), OTE computes the signal-to-noise ratio (S/N) achievable in a given observing time, or conversely, the integration time needed to achieve a desired S/N.

OTE can currently be used only for INTEGRAL's main instruments: SPI and IBIS. Not for JEM-X and OMC (interested users should refer to the JEM-X and OMC Observer's manual for details). All INTEGRAL proposers should use OTE in determining the duration of their proposed observations. These values are used by ISOC in the proposal's technical feasibility assessment used by the TAC.

OTE is accessed via the ISOC web site, <http://integral.esac.esa.int>, by clicking on 'Observation Tools' under 'INTEGRAL Announcement of Opportunity (AO)'.

#### 3.1 Using OTE

##### 3.1.1 Input

- *Select an instrument:* SPI or IBIS.
- *Select a continuum or line source.*
  - For a continuum calculation the user must set the lower and upper energies. The allowed range is 15 keV–10 MeV. OTE assumes a power law spectrum and the photon spectral index must be specified. If you wish to perform calculations for a continuum source, please make sure to read section 3.4.
  - For a line source, input the central energy and line width (FWHM). If the line is unresolved, a line width of 0.1 keV is sufficient.
- *Specify the S/N or the exposure time.*
- *Specify the source flux.*
  - This is the broad-band flux, in units of photons cm<sup>-2</sup> s<sup>-1</sup>, in either the selected energy range (for the continuum) or integrated over the full width at zero intensity (FWZI) for a line. Beware! The continuum sensitivity curves in the SPI and IBIS Observer's manuals are presented using different units: monochromatic flux density, i.e., photons cm<sup>-2</sup> s<sup>-1</sup> keV<sup>-1</sup>.
  - Enter the source position (optional) in either degrees or sexagesimal notation (J2000). OTE accesses the 2<sup>nd</sup> ISGRI catalogue and warns the user if there are any nearby bright sources; a bright source in the partially coded field of view can severely deteriorate image quality.



	<p style="text-align: center;"><b>INTEGRAL</b></p> <p style="text-align: center;"><i>Integral AO Tools</i></p> <p style="text-align: center;"><b>Software User Manual</b></p>	<p><b>Doc.No:</b> INT/OAG/08-0299/Dc</p> <p><b>Issue:</b> 1.0</p> <p><b>Date:</b> 10 March 2008</p> <p><b>Page:</b> 15 of 18</p>
---	---	--

- *Select the desired dither pattern.*
  - This will take into account the off-axis response of the instruments as INTEGRAL dithers:

a very important effect for SPI but not for IBIS (staring is not recommended). We generally recommend the 5x5 dither pattern (see the IBIS and SPI observer's manuals).
- *Click the 'Query' button.*

### 3.1.2 Output

OTE returns:

- The original input values
- Any nearby bright source information (coordinates from the 2<sup>nd</sup> ISGRI catalogue)
- Warnings, if part of the selected energy band for the source calculation is outside the energy range of the selected instrument
- Calculated exposure time, or S/N for the entire input energy range (for continuum sources) or for the FWZI (line sources)
- For continuum sources, the calculated exposure time, or S/N for the individual sub-bands used in the back-end calculations (see section 3.2). These may be useful, for example, for determining the energy above which the source fades into the background.

## 3.2 Continuum calculations: a note on energy ranges

While a broad energy range is allowed in the OTE input, the OTE back-end calculations themselves do not allow the use of a broad energy band, e.g., 20 keV to 10 MeV. The underlying algorithm in OTE calculates the *average* performance across a user defined continuum energy band given the flux of the source in that band. However, the sensitivity of the instruments can vary enormously over their energy ranges. In addition, the gamma-ray instruments can have very rapid changes in sensitivity in a comparatively small range of energies (especially around 511 keV). Also, many (most) gamma-ray sources exhibit steep spectra so that they are very much fainter at higher energies. Even for hard sources, including the highest energies will result in very low S/N due to the relatively high background at MeV energies, compared to the source flux.

For these reasons, in previous AOs, OTE was restricted to energy bands which are narrower than the entire instrumental bandpass. Of course the prospective observer may be in a situation where the continuum range of interest is rather wide. To allow this the front-end (GUI) of OTE allows the user to specify a wider band. OTE splits the input energy range into narrower sub-bands and, assuming a power law spectrum (with the flux and spectral index as user inputs), calculates the flux within each sub-band. It then performs individual calculations on these sub-bands, of the S/N, or observation duration, and finally combines these results into a global figure for the entire input energy band.

	<p style="text-align: center;"><b>INTEGRAL</b></p> <p style="text-align: center;"><i>Integral AO Tools</i></p> <p style="text-align: center;"><i>Software User Manual</i></p>	<p><b>Doc.No:</b> INT/OAG/08-0299/Dc</p> <p><b>Issue:</b> 1.0</p> <p><b>Date:</b> 10 March 2008</p> <p><b>Page:</b> 16 of 18</p>
---	---	--

### 3.3 Hints and warnings

(i) Units: Please be careful with units!

- Input and output time are in kiloseconds.
- All fluxes, both for lines and continua, should be given in units of photons cm<sup>-2</sup> s<sup>-1</sup>.

(ii) Prospective IBIS users should also note the following:

- The continuum range of interest can straddle the energy ranges of ISGRI and PICsIT and be only partially inside the energy range of one or both. If only one calculation is done for the entire range of interest, both sub-instruments might report a poorer response than is truly available. If one does go beyond the energy range of a (sub) instrument, a warning is given.
- In such a case, we recommend calculating the broad-band flux for the energy range of interest covered by ISGRI and by PICsIT separately and combining the results later.

(iii) The contributions of Compton photons to the S/N or observing time are not considered.



	<p style="text-align: center;"><b>INTEGRAL</b></p> <p style="text-align: center;"><i>Integral AO Tools</i></p> <p style="text-align: center;"><i>Software User Manual</i></p>	<p><b>Doc.No:</b> INT/OAG/08-0299/Dc</p> <p><b>Issue:</b> 1.0</p> <p><b>Date:</b> 10 March 2008</p> <p><b>Page:</b> 17 of 18</p>
---	---	--

## 4 Target Visibility Predictor (TVP)

The Target Visibility Predictor (TVP) is a web-based tool running at the INTEGRAL Science Operations Centre at ESAC and made available to potential observers.

TVP is used to determine when a source is visible to INTEGRAL. This is especially useful in determining whether INTEGRAL observations can be coordinated with other observatories, and if phase-dependent observations of binary systems, for example, can be performed.

TVP is accessed via the ISOC web site, <http://integral.esac.esa.int>, by clicking on ‘Observations tools’ under ‘INTEGRAL Announcement of Opportunity (AO)’.

### 4.1 Viewing constraints

INTEGRAL celestial viewing constraints are defined by power and thermal constraints (Sun), as well as star-tracker blinding constraints (Sun, Earth, Moon). The constraints used in this tool are that the spacecraft cannot point within  $50^\circ$  of the Sun, more than  $130^\circ$  away from the Sun, within  $15^\circ$  of the Earth’s limb, or within  $10^\circ$  of the Moon’s limb.

Since the Earth and Lunar orbits can be predicted very accurately, it is also possible to predict when any part of the celestial sphere is visible to INTEGRAL.

### 4.2 How visibility is calculated

Sky visibility is calculated by dividing the sky into approximately rectangular cells of  $10 \times 10$  degrees referred to as *skybins*. The visibility of each corner of a skybin is determined for every revolution in the mission, whenever INTEGRAL is above the Van Allen belts. If all four corners are simultaneously visible, that area of sky is deemed visible. The calculation is therefore (slightly) conservative. The results are stored in a *Data Base of Observable Bins* (DBOB), which contains the open and close times for every skybin during the mission, and the resulting available duration. This “open interval” never crosses revolution boundaries since science operations are not performed in the Van Allen belts around perigee.

### 4.3 Using TVP

#### 4.3.1 Input

- *Source Name* (Optional) Entering the source name and pressing “Get Simbad Coordinates” will fill in Ra and Dec coordinates. If the name is not found in Simbad database you will need to fill in Ra and Dec.
- *RA and Dec* (J2000) In either of the formats shown on the web page.
- *Dither pattern* For hexagonal or  $5 \times 5$  dither patterns, the TVP checks whether all points in the dither pattern are visible, not just the centre.
- *Start and End date* For the period of interest. Defaults are start and end dates in the DBOB, which cover the interval to beyond the end of the AO cycle. It is recommended to cover only the period of interest. Input should be in the format shown on the web page.

	<p style="text-align: center;"><b>INTEGRAL</b></p> <p style="text-align: center;"><i>Integral AO Tools</i></p> <p style="text-align: center;"><i>Software User Manual</i></p>	<p><b>Doc.No:</b> INT/OAG/08-0299/Dc</p> <p><b>Issue:</b> 1.0</p> <p><b>Date:</b> 10 March 2008</p> <p><b>Page:</b> 18 of 18</p>
---	---	--

- *Minimum Duration* In seconds. TVP will only return visibility of bins open for longer than this value. In the DBOB, bins can be open for as short as one second (if the bin is at the edge of the Earth or Moon constraint). However, the scheduling system would never attempt to use such a bin. We suggest 1800 seconds as a reasonable value.
- *Maximum Duration* In seconds. The longest possible open duration for a skybin is approximately 64 hours. This corresponds to the time during which INTEGRAL is continuously above the Van Allen belts. Thus we suggest that the maximum duration never be greater than 228000 sec, otherwise TVP would never find any skybins visible.

#### 4.3.2 Output

The output of TVP is a summary of the input parameters, and a time-ordered list of when the source (skybin) is visible. Each line in the list contains start and end times (UTC), and duration of visibility (seconds). Gaps of eight hours between successive visibility periods are usually due to Van Allen belt transit. Shorter gaps are due to Earth or Moon constraints and longer gaps to Sun/anti-Sun constraints.