

# **INTEGRAL**

**Science Operations Centre**

## **Announcement of Opportunity for Observing Proposals (AO-15)**



### **Integral AO Tools Software User Manual**

SRE-O-AO-00136

Issue 1.0


20 February 2017

Prepared by Emilio Salazar

	<p style="text-align: center;"><b>INTEGRAL</b></p> <p style="text-align: center;"><i>Integral AO Tools</i></p> <p style="text-align: center;"><i>Software User Manual</i></p>	<p><b>Doc.No:</b>     <b>SRE-O-AO-00136</b></p> <p><b>Issue:</b>         <b>1.0</b></p> <p><b>Date:</b>         <b>20 February 2017</b></p> <p><b>Page:</b>           <b>ii</b></p>
---	---	---

## Document Status Sheet

Document Title		Integral AO Tools Software User Manual	
Reference No:		SRE-O-AO-00136	
Issue	Revision	Date	Reason for change
1	0	20 Feb. 17	Issue for AO-15

	<p style="text-align: center;"><b>INTEGRAL</b>  <i>Integral AO Tools</i>  <i>Software User Manual</i></p>	<p><b>Doc.No:</b> SRE-O-AO-00136  <b>Issue:</b> 1.0  <b>Date:</b> 20 February 2017  <b>Page:</b> iii</p>
---	---	--

## Table of Contents

1	Introduction .....	5
2	Proposal Generation Tool (PGT).....	6
2.1	Entering data .....	6
2.1.1	The main Panel.....	6
2.1.2	The admin, proposal, observation and data rights details panels.....	6
2.2	Saving, loading and printing .....	11
2.2.1	Saving.....	11
2.2.2	Loading .....	11
2.2.3	Printing.....	11
2.3	Submitting a proposal to ISOC .....	12
2.3.1	Submitting for the first time .....	12
2.3.2	Resubmitting a proposal.....	13
2.3.3	Obtaining a copy of a submitted proposal from ISOC.....	13
2.4	Confirmation of multi-year proposals.....	13
3	Observing Time Estimator (OTE).....	15
3.1	Using OTE .....	15
3.1.1	Input .....	15
3.1.2	Output.....	16
3.2	Continuum calculations: a note on energy ranges .....	16
3.3	Hints and warnings .....	17
4	Target Visibility Predictor (TVP).....	18
4.1	Viewing constraints .....	18
4.2	How visibility is calculated.....	18
4.3	Using TVP .....	18
4.3.1	Input .....	18
4.3.2	Output.....	19
5	Exposure Map Tool (EMT).....	20
5.1	Using EMT .....	20
5.1.1	Input .....	20
5.1.2	Output.....	20



	<p style="text-align: center;"><b>INTEGRAL</b></p> <p style="text-align: center;"><i>Integral AO Tools</i></p> <p style="text-align: center;"><i>Software User Manual</i></p>	<p><b>Doc.No:</b> SRE-O-AO-00136</p> <p><b>Issue:</b> 1.0</p> <p><b>Date:</b> 20 Feb. 17</p> <p><b>Page:</b> 5 of 20</p>
---	---	--

## 1 Introduction

The purpose of this document is to describe the use of the software tools made available to observers who wish to submit a proposal for INTEGRAL observations.

The Integral AO Tools provided by the INTEGRAL Science Operations Centre (ISOC) include: the Proposal Generation Tool (PGT), the Observation Time Estimator (OTE) and the Target Visibility Predictor (TVP). The latest version of these tools together with the associated documentation is available from the ISOC web page: <http://integral.esac.esa.int>.

If you discover a problem with any of the tools, please read the Frequently Asked Questions (FAQ) at <http://integral.esac.esa.int/FAQ>. If you do not find the answer to your question, please contact the INTEGRAL Helpdesk: <mailto:inthelp@sciops.esa.int>.

## 2 Proposal Generation Tool (PGT)

PGT can be downloaded from: <http://integral.esac.esa.int/isoc/operations/html/pgtao12>.

Installation instructions and answers to FAQ are also provided there.

Once PGT has been successfully installed, it is launched by running an executable script called 'pgt' on UNIX-like platforms, clicking on the icon of the "Application" folder on Mac systems or by double-clicking on the desktop icon on Windows systems.

### 2.1 Entering data

#### 2.1.1 The main panel

The **Admin Details**, the **Proposal Details**, the **Observation Details** and the **Data Rights Panel** are accessed by clicking the corresponding button in the top half of the Main Panel.

Below the buttons that open the different panels, is the **Check Proposal** button that can be clicked at any time, and runs checks on the contents of required fields in the proposal. Warnings and failed check are shown in a pop-up window. Finally, clicking on **Submit Proposal to ISOC** sends the proposal to which is assigned a unique ID that you will receive in the email confirmation of a successful submission. Enter this proposal ID in the designated field if submitting updated versions of the same proposal.

#### 2.1.2 The admin, proposal, observation and data rights details panels

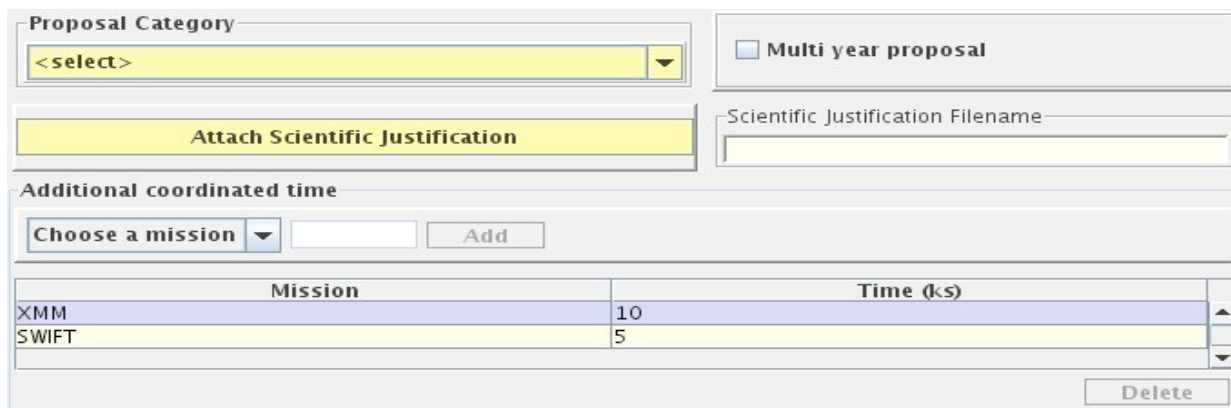
PGT provides four "details" panels that encompass all the information about the proposal. These are labelled: Admin, Proposal, Observation and Data Rights. *Fields with a light yellow background are mandatory.*

##### 2.1.2.1 Admin details panel

To specify the contact information of the principal investigator.

##### 2.1.2.2 Proposal details panel

To specify the title, abstract, scientific category and justification. In order to identify it as a multi-year proposal, click the corresponding check box.



The screenshot shows the bottom part of the Proposal Details Panel. It includes a 'Proposal Category' dropdown menu with '<select>' as the current selection. To the right is a checkbox for 'Multi year proposal'. Below these is a yellow button labeled 'Attach Scientific Justification' and a text field for 'Scientific Justification Filename'. Further down is a section for 'Additional coordinated time' with a 'Choose a mission' dropdown, an empty text field, and an 'Add' button. At the bottom is a table with two columns: 'Mission' and 'Time (ks)'. The table contains two rows: 'XMM' with a value of '10' and 'SWIFT' with a value of '5'. A 'Delete' button is located at the bottom right of the table.

Mission	Time (ks)
XMM	10
SWIFT	5

Figure 1 – The Proposal Details Panel (bottom part)

	<p style="text-align: center;"><b>INTEGRAL</b></p> <p style="text-align: center;"><i>Integral AO Tools</i></p> <p style="text-align: center;"><i>Software User Manual</i></p>	<p><b>Doc.No:</b> SRE-O-AO-00136</p> <p><b>Issue:</b> 1.0</p> <p><b>Date:</b> 20 Feb. 17</p> <p><b>Page:</b> 7 of 20</p>
---	---	--

Having selected the attachment, the name of the file will be shown in the Current Attachment box of the Proposal Details Panel. Saving the proposal does not save the attachment, but the full path to access it. Hence, there is no need to re-attach the file every time the proposal is loaded, except if you have changed the location of the file. Clearly, before submitting, if you make changes to the scientific justification after the file has been attached to the proposal, you must override the previous attachment by attaching the new version. There is no need to remove an attachment; only the last attachment is used. Selecting **Panel** → **Reset** will clear all fields and also remove the attachment.

The panel allows for the request of additional coordinated time from other missions such as **XMM-Newton**, **SWIFT** or **NuSTAR**. Simply select the mission from the drop down list, type in the desired amount of time (kilo seconds) and click on the ‘Add’ button. Now the mission is added to the table at the bottom of the panel, ready to be submitted. If you change your mind and want to modify the requested time, repeat the process again with the new value. You can also discard the request by selecting the target mission from the table and clicking the ‘Delete’ button.

### 2.1.2.3 Observation details panel

To specify the technical details of each observation included in the proposal (see Figure 3).

Each observation in a proposal is numbered sequentially, as shown in the **Number** field on the left of the tool bar at the top of the Observation Details Panel. Here, you can see the number of the currently displayed observation and the total number of observations in the proposal.

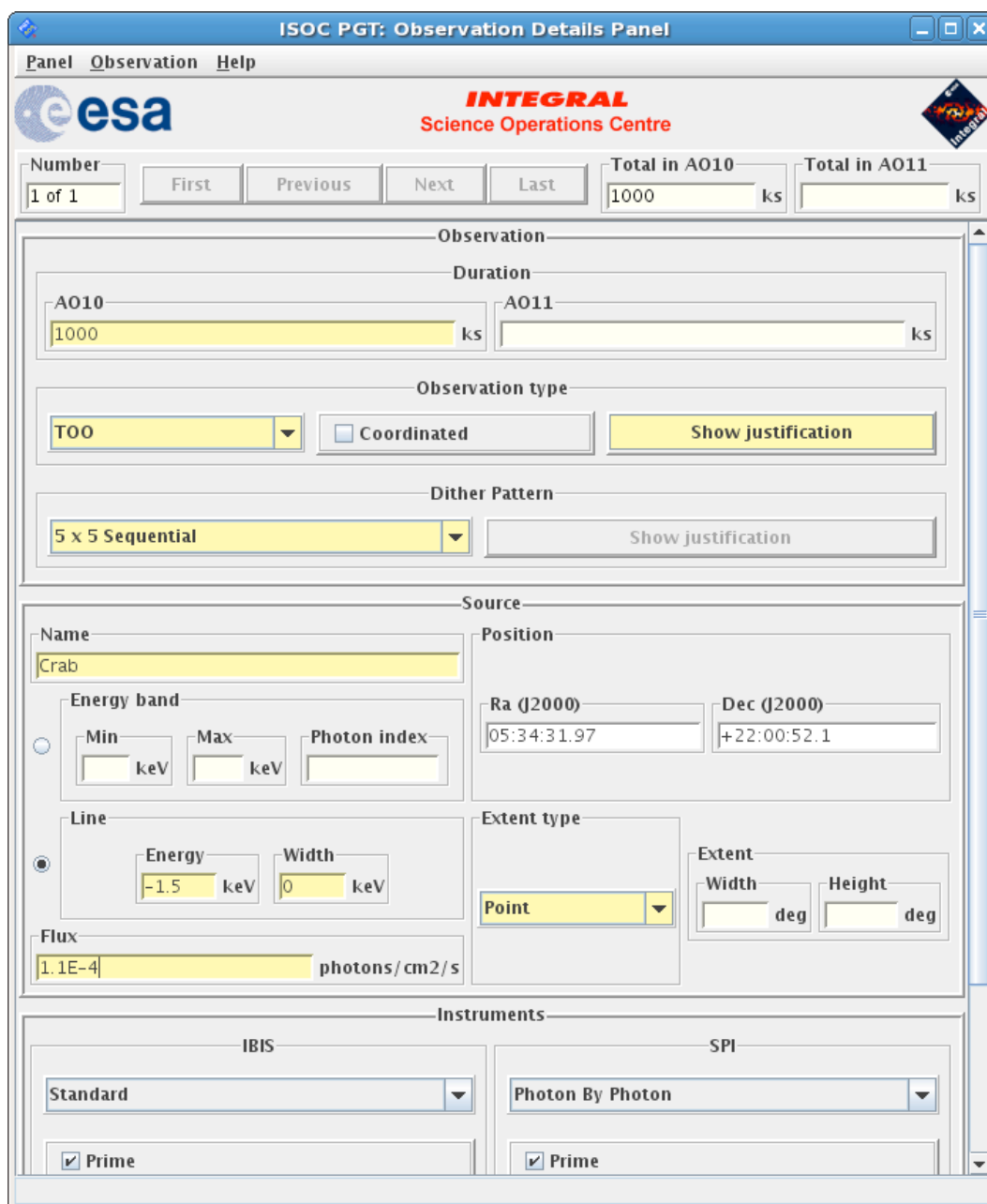
In the **Observation** section of the panel, enter the **Duration** for the current AO, and the next if this is a multi-year proposal. The **Dither pattern** and **Observation type** must be selected from the drop down menus.

There are three types of observations: Normal, Fixed Time and TOO, and a flag to identify the observation as coordinated. For all observations other than Normal, you must click on the **Show Justification** button and enter the details of the observation. These should include a short justification for Fixed Time or TOO observations, or an explanation of how the observation is to be coordinated with other observatories. It is not possible to mix TOO observations with Normal or Fixed Time ones into the same proposal. Selecting a dither pattern other than 5x5 must also be justified by clicking **Show Justification** and explaining the reason.

In the **Source** section of the panel, the name of the source entered in the **Name** field is checked against the Simbad, NED and VIZIER astronomical databases when pressing the **Check Proposal** button in the Main Panel. If the source name is not found (i.e. because it is unknown), a warning will appear in the Failed Checks Panel. The coordinates of the source specified in RA and Dec (J2000), either in HMS or decimal degrees, define the centre of standard dither patterns (or select the N/A checkbox if not applicable).

In addition to the two menu items that appear on all PGT panels, namely **Panel** and **Help**, the Observation Details Panel has another one labelled **Observation** (see Figure 4). Under this menu item, you can perform a number of actions: **add** a new observation (the display will show

the new observation), **delete**, **duplicate** or **check** the currently displayed observation and **go to** a particular observation. **copy n**, makes “n” copies of the current observation, and **delete n**, deletes the range of observations specified. Finally, **import source list** allows importing a list of sources either from a text file containing for each source (one per line), its tab-separated Name, RA and Dec, or by typing in these values in the table. Using the button labelled ‘Generate Observations’ in the Import Source List panel (see Figure 5) will create an observation for each source in the list.



The screenshot shows the 'ISOC PGT: Observation Details Panel' window. It features a menu bar with 'Panel', 'Observation', and 'Help'. The ESA logo and 'INTEGRAL Science Operations Centre' branding are at the top. The interface is divided into several sections:

- Navigation:** Includes a 'Number' field (1 of 1), buttons for 'First', 'Previous', 'Next', and 'Last', and 'Total in AO10' (1000 ks) and 'Total in AO11' (ks) fields.
- Observation Section:**
  - Duration:** Fields for 'AO10' (1000 ks) and 'AO11' (ks).
  - Observation type:** A dropdown menu set to 'T00', a 'Coordinated' checkbox, and a 'Show justification' button.
  - Dither Pattern:** A dropdown menu set to '5 x 5 Sequential' and a 'Show justification' button.
- Source Section:**
  - Name:** A text field containing 'Crab'.
  - Position:** Fields for 'Ra (J2000)' (05:34:31.97) and 'Dec (J2000)' (+22:00:52.1).
  - Energy band:** Radio buttons for 'Min' and 'Max' with corresponding 'keV' fields, and a 'Photon index' field.
  - Line:** Radio buttons for 'Energy' and 'Width' with corresponding 'keV' fields.
  - Extent type:** A dropdown menu set to 'Point' and an 'Extent' section with 'Width' and 'Height' fields in degrees.
  - Flux:** A text field showing '1.1E-4 photons/cm2/s'.
- Instruments Section:**
  - IBIS:** A dropdown menu set to 'Standard' and a 'Prime' checkbox.
  - SPI:** A dropdown menu set to 'Photon By Photon' and a 'Prime' checkbox.



Figure 2 - The Observation Details Panel (upper part)

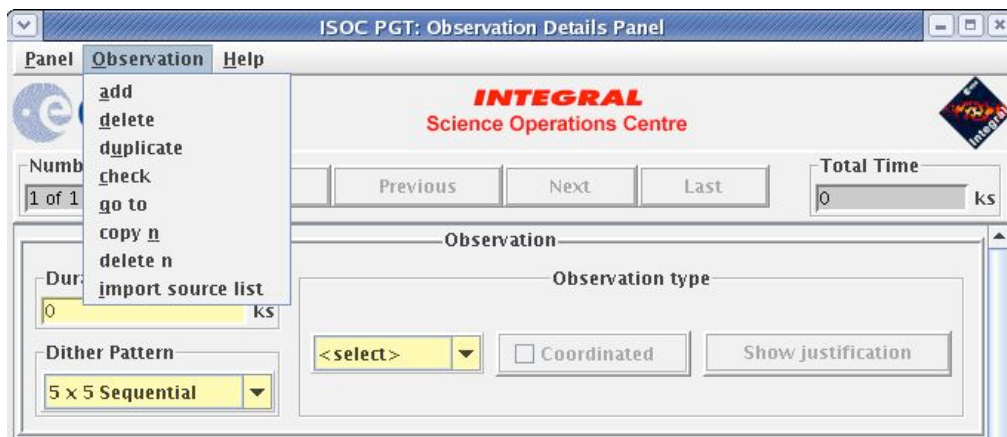


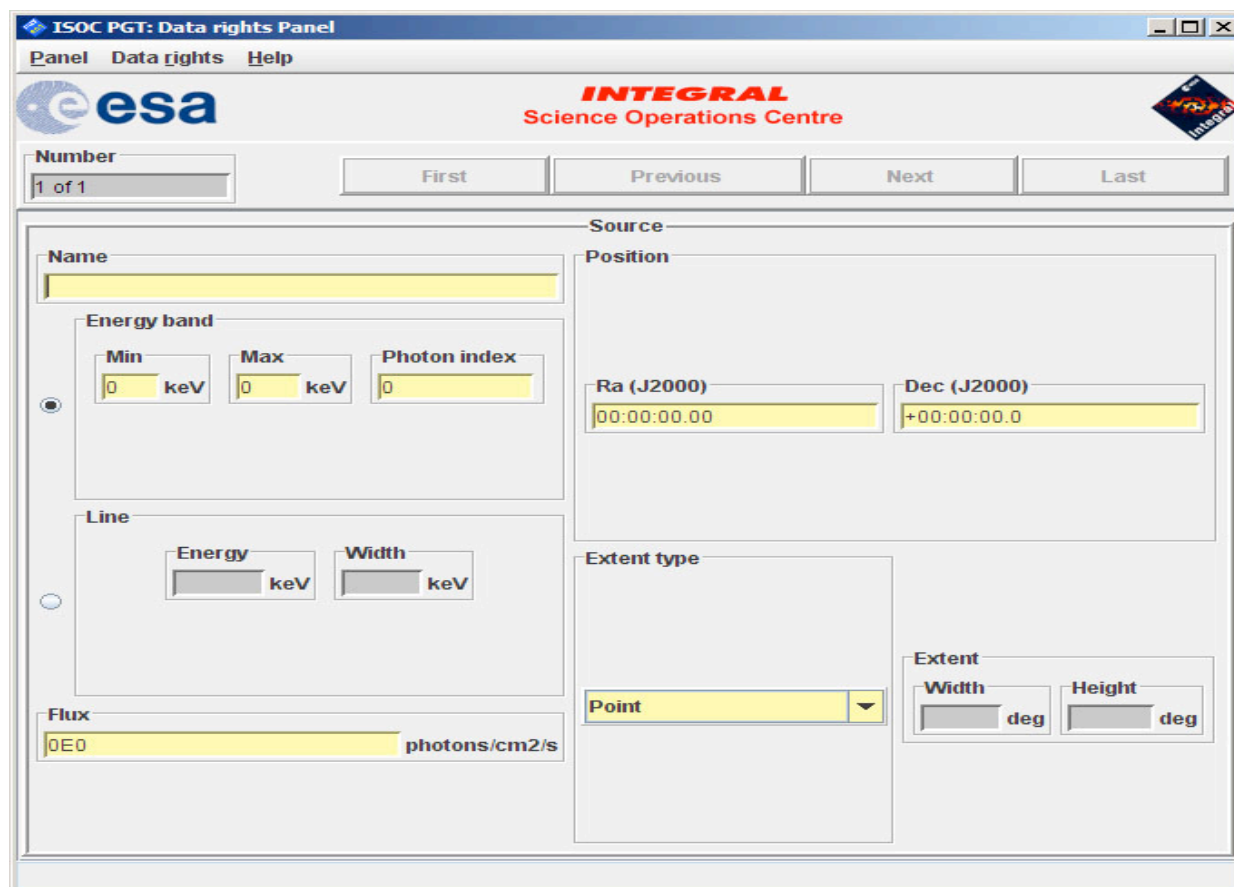
Figure 3 - The Observation Menu



Figure 5 – Import source list

#### 2.1.2.4 Data rights details panel

To claim data rights on specified observations. They can be automatically generated from the observations list or they can be manually inserted using the fields in the panel (see Figure 6). If no data rights are specified, the data will be considered as **public** and a warning will be shown when checking the proposal. The Data Rights Details Panel has a menu option labelled **Data Rights** in addition to the **Panel** and **Help** menu items (see Figure 7). From it, you can: **add** new data rights (the display will show the new data rights), **delete**, **duplicate** or **check** the currently displayed data rights and **go to** a particular one. The item **copy n** makes “n” copies of the current data rights, and **delete n** deletes the range of data rights specified. The item **import source list** works exactly as in the Observation Details Panel, and similarly the button “Generate Data Rights” creates data rights for each source in the list. Finally, **generate data rights from observations** will create data rights from the observations in the proposal, but will also **delete** the currently defined data rights.



ISOC PGT: Data rights Panel

Panel Data rights Help

esa

**INTEGRAL**  
Science Operations Centre

Number: 1 of 1

First Previous Next Last

Name: [Empty field]

Source Position

Energy band:

- Min: [0] keV
- Max: [0] keV
- Photon index: [0]

Line:

- Energy: [Empty] keV
- Width: [Empty] keV

Flux: [0E0] photons/cm2/s

Ra (J2000): [00:00:00.00]

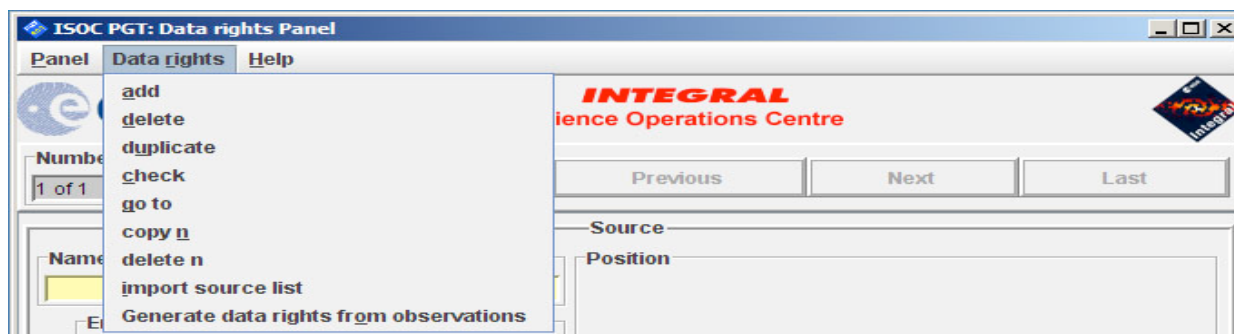
Dec (J2000): [+00:00:00.0]

Extent type: Point

Extent:

- Width: [Empty] deg
- Height: [Empty] deg

Figure 6 - The Data Rights Details Panel (upper part)



ISOC PGT: Data rights Panel

Panel Data rights Help

esa

**INTEGRAL**  
Science Operations Centre

Number: 1 of 1

Previous Next Last

Source Position

Data rights menu:

- add
- delete
- duplicate
- check
- go to
- copy n
- delete n
- import source list
- Generate data rights from observations

Figure 7 - The Data rights menu

## 2.2 Saving, loading and printing

### 2.2.1 Saving

To save a proposal at any time, select **File** → **Save** in the menu of the Main Panel (see **Error! Reference source not found.**).

All proposal information is stored in a well-defined XML file.

### 2.2.2 Loading

To load a saved proposal, select **File** → **Open** in the menu of the Main Panel. The PGT proposal file format is XML. If you wish to use a proposal from the previous AO, request it through the ISOC Helpdesk (mailto:inthelp@sciops.esa.int) by specifying the Proposal ID. You should not edit the XML file by hand.

### 2.2.3 Printing

To print a proposal or parts of it, first choose the printing options by selecting **File** → **Print** → **Options** in the menu of the Main Panel. This will open the *Print Options* dialog (see Figure 8).

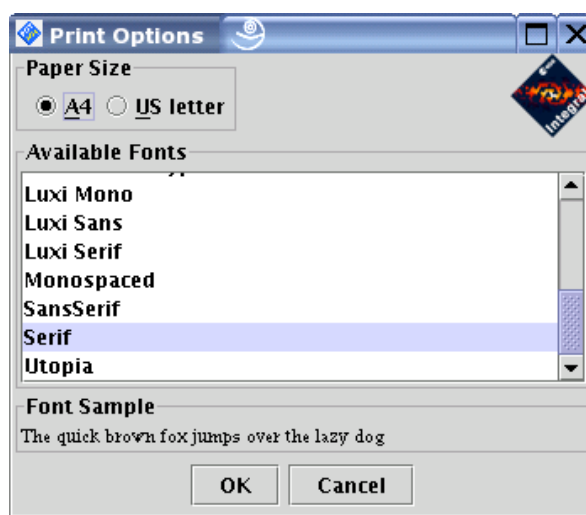


Figure 8 - The Print Options dialogue

Two paper sizes are supported, A4 and US letter. Click on the appropriate button at the top of the dialogue to choose the paper size. The list of fonts from which you can select will appear below. After having selected the paper size and font, set them by clicking **OK**, or **Cancel** to disregard the selection and close the dialogue.

To print the *entire proposal*, select **File** → **Print** → **Proposal** in the menu of the Main Panel. A Print dialogue will appear and allow you to select a destination (printer or file) and start the print job. The exact appearance of this dialogue will depend on the platform you are using. The administrative details and the proposal details can be printed individually by selecting **Panel** → **Print** in the menu bar of the corresponding panel.

Observation details can be printed by selecting **Panel** → **Print** → **All Observations** to print all the observations, or by selecting **Panel** → **Print** → **Current Observation** to print an individual

observation. To print a summary of all the observations in the proposal (one observation per line), select **Panel** → **Print** → **Summary**.

## 2.3 Submitting a proposal to ISOC

The PGT allows you to send your proposal electronically to the ISOC. To do this, your computer must be connected to the Internet.

### 2.3.1 Submitting for the first time

Clicking the **Submit Proposal to ISOC** button in the lower part of the Main Panel starts the submission process. PGT will first check your proposal. If there are any warnings or checks that fail, they will appear in the Failed Checks Panel. Fails will abort the submission process and require you to make the necessary corrections. Warnings should be reviewed carefully and corrected if possible, but they will not prevent from submitting the proposal. When all checks pass, the Summary Panel will show an overview of the requested time and observations (Figure 9). Click **Submit** to send the proposal or **Cancel** to abort the submission.

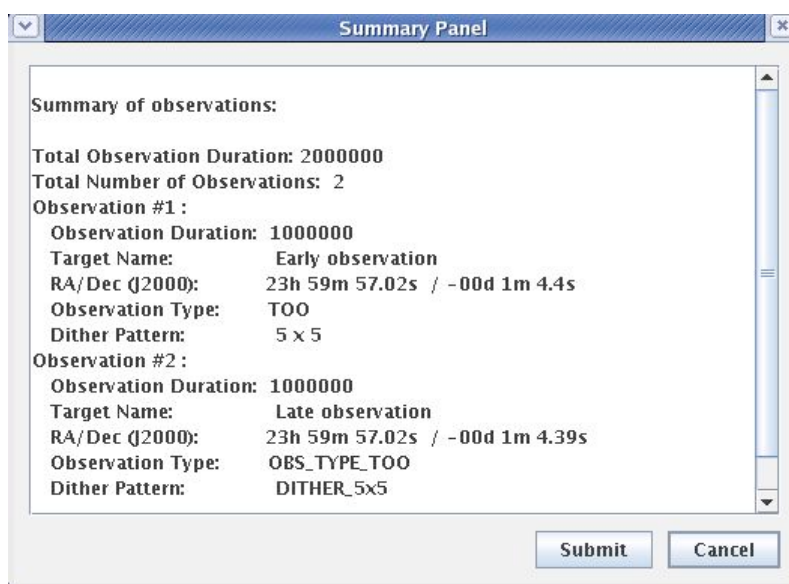


Figure 9 - The Summary Panel

By clicking **Submit**, PGT will attempt to establish a connection with a computer at ISOC that has been set up to receive proposals. Once it is established, the proposal will be sent. If the proposal was sent successfully, the following dialogue will be displayed (Figure 10).

	<p style="text-align: center;"><b>INTEGRAL</b> <i>Integral AO Tools</i> <i>Software User Manual</i></p>	<p><b>Doc.No:</b> SRE-O-AO-00136 <b>Issue:</b> 1.0 <b>Date:</b> 20 Feb. 17 <b>Page:</b> 13 of 20</p>
---	---	--

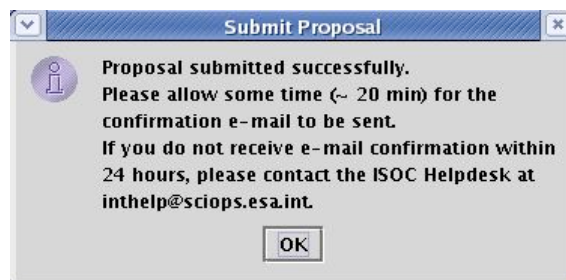


Figure 10 - Successful Submission dialogue

When a proposal is received at ISOC, further automatic checks are performed on the proposal. If all checks pass, a proposal ID is assigned and included in the confirmation email sent to the PI. If some checks fail, however, no proposal ID is assigned and the information about the failed checks is sent in the receipt-confirmation email.

### 2.3.2 Resubmitting a proposal

If you want to update a proposal you have already submitted, you can resubmit a proposal using the *Proposal ID*.

Update your proposal and enter the *Proposal ID* in the box provided at the bottom of the Main Panel (see **Error! Reference source not found.**). The **Resubmit Proposal to ISOC** button will be enabled and the **Submit Proposal to ISOC** button will be disabled. When you click the **Resubmit Proposal to ISOC** button, PGT will repeat the proposal submission process, described above.

The computer at ISOC will use the *Proposal ID* entered to find the previous version of the proposal in the ISOC database. If it is found, the resubmitted proposal will replace the previous one. If it is not found, the receipt confirmation email message will inform you of that fact (make sure the *Proposal ID* is correct).

PGT cannot prevent a proposer from submitting the same proposal multiple times as new proposals. A new *Proposal ID* will be generated for each new submission. Therefore, be cautious when resubmitting a modified version of the same proposal.

### 2.3.3 Obtaining a copy of a submitted proposal from ISOC

After submitting a proposal, it should be saved for future reference, and to allow for the possibility of resubmitting the proposal at a later date.

You can also request a copy of your proposal by writing to the ISOC Helpdesk (<mailto:inthelp@sciops.esa.int>); refer to it by its *Proposal ID*. You will receive it by email.

## 2.4 Confirmation of multi-year proposals

To confirm accepted observations of an approved previous AO multi-year proposal, a new menu option is available: **File** → **Confirm multi-year continuation**. This opens a new window to enter the previous AO *Proposal ID* with the corresponding verification code sent by email to the PI. The previously accepted proposal will be loaded into PGT by clicking the button **Ok**.

	<p style="text-align: center;"><b>INTEGRAL</b></p> <p style="text-align: center;"><i>Integral AO Tools</i></p> <p style="text-align: center;"><i>Software User Manual</i></p>	<p><b>Doc.No:</b> SRE-O-AO-00136</p> <p><b>Issue:</b> 1.0</p> <p><b>Date:</b> 20 Feb. 17</p> <p><b>Page:</b> 14 of 20</p>
---	---	---

Details of the accepted observations cannot be changed in the confirmation. Additional information may be provided in the brief scientific justification of the confirmation (see the Mission Overview document for more details). To submit the confirmation proposal use the button **Submit proposal to ISOC**.

In case you want to re-submit the confirmation proposal with an updated scientific justification, use the same menu option and procedure as for the first confirmation.



	<p style="text-align: center;"><b>INTEGRAL</b></p> <p style="text-align: center;"><i>Integral AO Tools</i></p> <p style="text-align: center;"><i>Software User Manual</i></p>	<p><b>Doc.No:</b> SRE-O-AO-00136</p> <p><b>Issue:</b> 1.0</p> <p><b>Date:</b> 20 Feb. 17</p> <p><b>Page:</b> 15 of 20</p>
---	---	---

### 3 Observing Time Estimator (OTE)

The Observing Time Estimator (OTE) is a web-based tool running at the INTEGRAL Science Operations Centre at ESAC and made available to potential observers. Below is a description of OTE version 5. Improvements over the previous version includes a considerable increase in speed and slight changes in presentation. The underlying instrument response data is kept up to date for each AO.

The purpose of OTE is to give users a reliable guide as to the feasibility of their proposed observation. For example, given specific source characteristics (spectrum, flux), OTE computes the signal-to-noise ratio (S/N) achievable in a given observing time, or conversely, the integration time needed to achieve a desired S/N.

OTE can currently be used only for INTEGRAL's main instruments: SPI and IBIS (interested users should refer to the JEM-X and OMC Observer's manual for details).

All INTEGRAL proposers shall use OTE in determining the duration of their proposed observations. Output of the OTE will be used by ISOC during the technical feasibility assessment and during the proposal evaluation by TAC.

OTE is accessed via the ISOC web site, <http://integral.esac.esa.int>, under 'INTEGRAL Observation Tools'.

#### 3.1 Using OTE

##### 3.1.1 Input

- *Select an instrument:* SPI or IBIS.
- *Select continuum or line*
  - For a continuum calculation the user must set the lower and upper energies. The allowed range is 15 keV–10 MeV. OTE assumes a power law spectrum and the photon spectral index must be specified. If you wish to perform calculations for continuum, please make sure to read section 3.2.
  - For line, input the central energy and line width (FWHM). If the line is unresolved, a line width of 0.1 keV is sufficient.
- *Specify the S/N or the exposure time.*
- *Specify the source flux.*
  - This is the integrated broad-band flux, in units of photons cm<sup>-2</sup> s<sup>-1</sup>, in either the selected energy range (for the continuum) or integrated over the full width at zero intensity (FWZI) for a line. Beware! The continuum sensitivity curves in the SPI and IBIS Observer's manuals are presented using different units: monochromatic flux density, i.e., photons cm<sup>-2</sup> s<sup>-1</sup> keV<sup>-1</sup>.
  - Enter the source position (optional) in either degrees or sexagesimal notation (J2000). OTE accesses the ISGRI catalogue and warns the user if there are any nearby bright

	<p style="text-align: center;"><b>INTEGRAL</b></p> <p style="text-align: center;"><i>Integral AO Tools</i></p> <p style="text-align: center;"><i>Software User Manual</i></p>	<p><b>Doc.No:</b> SRE-O-AO-00136</p> <p><b>Issue:</b> 1.0</p> <p><b>Date:</b> 20 Feb. 17</p> <p><b>Page:</b> 16 of 20</p>
---	---	---

sources; a bright source in the partially coded field of view can severely deteriorate image quality.

- *Select the desired dither pattern.*
  - This will take into account the off-axis response of the instruments as INTEGRAL dithers: a very important effect for SPI but not for IBIS (staring or HEX are not recommended). We generally recommend the 5x5 dither pattern (see the IBIS and SPI Observer's Manuals).
- *Click the 'Query' button.*

### 3.1.2 Output

OTE returns:

- The original input values
- Any nearby bright source information (coordinates from the 3<sup>rd</sup> ISGRI catalogue)
- Warnings, if part of the selected energy band for the source calculation is outside the energy range of the selected instrument
- Calculated exposure time, or S/N for the entire input energy range (for continuum calculations) or for the FWZI (line calculations)
- For continuum calculations, the calculated exposure time, or S/N for the individual sub-bands used in the back-end calculations (see section 3.2). These may be useful, for example, for determining the energy above which the source fades into the background.

## 3.2 Continuum calculations: a note on energy ranges

While a broad energy range is allowed in the OTE input, the OTE back-end calculations themselves do not allow the use of a broad energy band, e.g., 20 keV to 10 MeV. The underlying algorithm in OTE calculates the *average* performance across a user defined continuum energy band given the flux of the source in that band. However, the sensitivity of the instruments can vary enormously over their energy ranges. In addition, the gamma-ray instruments can have very rapid changes in sensitivity in a comparatively small range of energies (especially around 511 keV). Also, many (most) gamma-ray sources exhibit steep spectra so that they are very much fainter at higher energies. Even for hard sources, including the highest energies will result in very low S/N due to the relatively high background at MeV energies, compared to the source flux.

For these reasons, in previous AOs, OTE was restricted to energy bands which are narrower than the entire instrumental bandpass. Of course the prospective observer may be in a situation where the continuum range of interest is rather wide. For this reason, it is possible to specify a wide energy band in the interface.. OTE splits the input energy range into narrower sub-bands and, assuming a power law spectrum (with the flux and spectral index as user inputs), calculates the flux within each sub-band. It then performs individual calculations on these sub-bands, of the S/N, or observation duration, and finally combines these results into a global figure for the entire input energy band.



	<p style="text-align: center;"><b>INTEGRAL</b>  <i>Integral AO Tools</i>  <i>Software User Manual</i></p>	<p><b>Doc.No:</b> SRE-O-AO-00136  <b>Issue:</b> 1.0  <b>Date:</b> 20 Feb. 17  <b>Page:</b> 17 of 20</p>
---	---	---

### 3.3 Hints and warnings

(i) Units: Please be careful with units!

- Input and output time are in kiloseconds.
- All fluxes, both for lines and continua, should be given in units of photons cm<sup>-2</sup> s<sup>-1</sup>.

(ii) Prospective IBIS users should also note the following:

- The continuum range of interest can straddle the energy ranges of ISGRI and PICsIT and be only partially inside the energy range of one or both. If only one calculation is done for the entire range of interest, both detector arrays might report a poorer response than is truly available. If one does go beyond the energy range of a detector array, a warning is given.
- In such a case, we recommend calculating the broad-band flux for the energy range of interest covered by ISGRI and by PICsIT separately and combining the results later.

(iii) The contributions of Compton photons to the S/N or observing time are not considered.

	<p style="text-align: center;"><b>INTEGRAL</b></p> <p style="text-align: center;"><i>Integral AO Tools</i></p> <p style="text-align: center;"><i>Software User Manual</i></p>	<p><b>Doc.No:</b> SRE-O-AO-00136</p> <p><b>Issue:</b> 1.0</p> <p><b>Date:</b> 20 Feb. 17</p> <p><b>Page:</b> 18 of 20</p>
---	---	---

## 4 Target Visibility Predictor (TVP)

The Target Visibility Predictor (TVP) is a web-based tool running at the INTEGRAL Science Operations Centre at ESAC and made available to potential observers.

TVP is used to determine when a source is visible by INTEGRAL. This is especially useful in determining whether INTEGRAL observations can be coordinated with other observatories, and if phase-dependent observations of binary systems, for example, can be performed.

TVP is accessed via the ISOC web site, <http://integral.esac.esa.int>, under ‘INTEGRAL Observation Tools’.

### 4.1 Viewing constraints

INTEGRAL celestial viewing constraints are defined by power and thermal constraints (Sun), as well as star-tracker blinding constraints (Sun, Earth and Moon). The viewing constraints used in this tool are such that the pointing direction of the spacecraft must be greater than 50 degrees away from the Sun and the anti-Sun and within 15 deg of the Earth's limb, or within 10 degrees of the Moon's limb.

Since the Earth and Lunar orbits can be predicted very accurately, it is also possible to predict when any part of the celestial sphere is visible by INTEGRAL.

### 4.2 How visibility is calculated

Sky visibility is calculated by dividing the sky into approximately rectangular cells of 10 x 10 degrees referred to as *skybins*. The visibility of each corner of a skybin is determined for every revolution in the mission, whenever INTEGRAL is above the Van Allen belts. If all four corners are simultaneously visible, that area of sky is deemed visible. The calculation is therefore (slightly) conservative. The results are stored in a *Data Base of Observable Bins* (DBOB), which contains the open and close times for every skybin during the mission, and the resulting available duration. This “open interval” never crosses revolution boundaries since science operations are not performed in the Van Allen belts around perigee.

### 4.3 Using TVP

#### 4.3.1 Input

- *Source Name* (Optional) Entering the source name and pressing “Get Simbad Coordinates” will fill in RA and Dec coordinates. If the name is not found in the Simbad database you will need to fill in RA and Dec.
- *RA and Dec (J2000)* In either of the formats shown on the web page.
- *Dither pattern* For hexagonal or 5x5 dither patterns, the TVP checks whether all points in the dither pattern are visible, not just the centre.
- *Start and End date* For the period of interest. Defaults are start and end dates of the current AO cycle. Boundaries are start of the mission and end of the current AO cycle,

although it is strongly recommended to cover only the period of interest. Input should be in the format shown on the web page.

- **Minimum Duration** In seconds. TVP will only return visibility of bins open for longer than this value. In the DBOB, bins can be open for as short as one second (if the bin is at the edge of the Earth or Moon constraint). However, the short term observation scheduling system would never attempt to use such a bin. We suggest 1800 seconds as a reasonable value, which currently is the minimum exposure time.

### 4.3.2 Output

The output of TVP is a summary of the input parameters, and a time-ordered list of when the source (skybin) is visible. Each line in the list contains start and end times (UTC), and duration of visibility (seconds). Gaps of eight hours between successive visibility periods are usually due to Van Allen belt transit. Shorter gaps are due to Earth or Moon constraints and longer gaps to Sun/anti-Sun constraints.

Coordinate Epoch must be 2000. Format can be either decimal degrees or HH:MM:SS.S and DD:MM:SS.S		
Source name (optional)	Crab	<input type="button" value="lookup"/>
Right ascension	83.6332083	(e.g. 123.4 or 8:13:36)
Declination	22.0144611	(e.g. 10.6 or +10:36:00)
Dither pattern	<input type="radio"/> Staring <input checked="" type="radio"/> Raster <input type="radio"/> Hexagonal	
Visibility Information		
Start date	01-03-2012	
End date	31-03-2012	
Minimum duration(s)	1800	(in seconds e.g. 1000, this should be less than one revolution, i.e., ~220000)
<input type="button" value="predict"/> <input type="button" value="reset"/>		
Target Visibility Predictor results.		
Input values used to compute visible Skybins		
Right Ascension	83.6332083 (05:34:31.97)	
Declination	22.0144611 (+22:00:52.1)	
Start Date	2012-03-01	
End Date	2012-03-31	
Dither Pattern	Raster	
Minimum Duration (sec)	1800	
Visibility Intervals		
start date	end date	duration (sec)
2012-02-28 06:52:32 GMT	2012-03-01 12:39:54 GMT	193642
2012-03-02 19:14:42 GMT	2012-03-05 00:33:42 GMT	191940
2012-03-05 06:26:06 GMT	2012-03-08 00:22:43 GMT	237397
2012-03-08 06:14:22 GMT	2012-03-11 00:13:31 GMT	237549
2012-03-11 06:04:50 GMT	2012-03-14 00:03:21 GMT	237511
2012-03-14 05:55:00 GMT	2012-03-16 23:50:58 GMT	237358
2012-03-17 05:42:58 GMT	2012-03-19 23:37:56 GMT	237298
2012-03-20 05:29:44 GMT	2012-03-22 23:26:04 GMT	237380
2012-03-23 05:17:26 GMT	2012-03-25 23:14:31 GMT	237425
2012-03-26 05:05:58 GMT	2012-03-28 10:51:55 GMT	193557
2012-03-29 20:09:26 GMT	2012-03-31 22:49:41 GMT	182415
Total visible time		2423472

## 5 Exposure Map Tool (EMT)

The Exposure Map Tool (EMT) is a web-based tool running at the INTEGRAL Science Operations Centre at ESAC and made available to potential observers.

EMT is used to get the exposure time at a given point in the sky. The exposure time is the time INTEGRAL has observed that point according to an exposure map (IBIS or SPI observation maps).

EMT is accessed via the ISOC web site, <http://integral.esac.esa.int>, under ‘INTEGRAL Observation Tools’.

### 5.1 Using EMT

#### 5.1.1 Input

- *Exposure map* Select the desired exposure map from the list
- *Source Name* (Optional) Entering the source name and pressing “Get Simbad Coordinates” will fill in RA and Dec coordinates. If the name is not found in the Simbad database you will need to fill in RA and Dec
- *RA and Dec (J2000)* In either of the formats shown on the web page.

#### 5.1.2 Output

The output of TVP is a summary of the input parameters, and the total time INTEGRAL has observed the target together with the details of the exposure map.

#### Exposure Map Tool

Select exposure map:		All maps ▾	
<b>Target coordinates</b> Enter in equatorial coordinates (right ascension and declination) or galactic coordinates (L and B)		<input checked="" type="radio"/> Equatorial coordinates <input type="radio"/> Galactic coordinates	
Source Name:	<input style="width: 150px;" type="text"/>	Get Simbad Coordinates	
Right ascension or L	<input style="width: 100px;" type="text"/>	Degrees or HHMMSS	Degrees or DDMMSS
Declination or B	<input style="width: 100px;" type="text"/>	Degrees or DDMMSS	Degrees or DDMMSS
Query			

Queried for galactic coordinates (184.5575472, -5.7842825)

**Integral has observed this target for 5,870.2 kiloseconds** (IBIS observation map AO8)

Map IBIS observation map AO8, details:

IBIS exposure map, ISOC DB with ECS information plus prediction upto end of A0-8  
09 Mar 2011

**Integral has observed this target for 4,988.8 kiloseconds** (SPI observation map AO8)

Map SPI observation map AO8, details:

SPI exposure map, ISOC DB with ECS information plus prediction upto end of A0-8  
09 Mar 2011